

Plans Approved for Forming Village Recreation Council

A long time need in the community has been filled, as a result of Tuesday evening's Village Council meeting. At Tuesday's meeting, the council approved an ordinance allowing for the establishment of a Village Recreation Council.

Final approval for such a council must come from both the Village Council and the Board of Education.

Robert Daniels, who has been the primary backer of this program, indicated that the new council will co-ordinate activities of the existing Recreation Association, the school system, and the village government. The program stems from an investigation, which Daniels helped make on a committee formed by the Chelsea Kiwanis Club, two years ago. Purpose of Daniels' com-

mittee, which counted members from the Jaycees, the school administration, and the recreation council, was to examine existing recreation facilities in the village, as well as the potential for expanding them, and measuring the need for them.

Result of the study, which followed the study of the village planning commission very close-

ly, was that there was enough land for recreation use within the village, found on the school grounds. Daniels and his fellow committee members then sought to form a joint council which would utilize the land resources of the schools, and the capital of both the Recreation Council, and the Village of Chelsea, to make available more

recreation programs for all members of the village.

As the present plans for the new Recreation Council stand, it will include representatives from the Village Council, the school board, and individuals elected at large. A planning committee will direct activities of the new organization. The planning committee will be composed of two mem-

bers of the recreation council, and one member from the school board, and one from the village council, along with the school business manager, and the village administrator.

No monies from the school would be spent on this program, Daniels stated, although the schools would continue to maintain those areas which are be-

ing used for the council's activities.

The council would sponsor primarily outdoor activities and would gradually add to the number of baseball diamonds, tennis courts, and so on, which are available to local citizens.

Dr. Gene Miller is presently head of the former Recreation Council, which is funded almost

totally by the Chelsea Community Chest. Ken Larson is presently administrator of the program.

The ordinance will become effective 20 days following passage, which means the earliest date upon which an agreement between the Board of Education and the Village Council can be finalized is April 26.

WEATHER

	Min.	Max.	Precip.
Wednesday, March 31	27	57	0.00
Thursday, April 1	29	53	Trace
Friday, April 2	31	44	Trace
Saturday, April 3	27	49	0.00
Sunday, April 4	24	47	0.00
Monday, April 5	21	41	0.00
Tuesday, April 6	24	52	0.00

By H. K. L.

The Chelsea Standard

ONE HUNDRED-FIRST YEAR—No. 42

12 Pages This Week

CHELSEA, MICHIGAN, THURSDAY, APRIL 8, 1971

15c per copy

SUBSCRIPTION: \$4.00 PER YEAR

Townships All Hike Budgets for Next Year

Sylvan OKs Blacktop For McKinley Rd.

Local townships met this past week-end to review their budgets for the coming year, and discuss with residents problems which the local townships must face in the next 12 months. At most meetings, an average or greater than average turn-out responded to participate in this yearly event.

A total of 25 residents of Sylvan township, which is a higher number than average, appeared Saturday to discuss township business, and review the budget. According to township clerk, Daniel Murphy, the majority of the people who came to the meeting were still grumbling about the increased valuation shown in their taxes, and some discussion centered around the situation.

Salaries of township officials remained the same, with the exceptions of car allowances. Residents voted to change car allowances from a flat fee to a straight fee of 10 cents per mile. Formerly the supervisor has received an allowance of \$1,200, while the clerk and treasurer each received \$100.

Total budget for the township will be \$79,201 for the coming year, Murphy said. This is an increase of \$8,000 over last year's budget, which is primarily attributed to anticipated increased spending for upkeep of roads. The portion allocated to pay the County Road Commission was set at \$38,331 for the coming year, which is \$10,000 more than past years. This is because the township is planning to blacktop and double seal a one-half mile stretch of McKinley Rd., from the city limits to the first curve in the road.

Murphy reported no actual contest of the budget, aside from the decision to change the basis for the car allowance. Residents felt that this system was more fair, and a better test of how much the various officials must drive in a year performing township business.

Murphy stated that at present township salaries are \$6,000 for the supervisor, and \$6,000 for the treasurer. Township clerk receives \$4,000.

Township residents also approved a levy of 1/4 mill for the township to help meet their expenses this year. Last year, there was no millage levied, although in the past Murphy stated the township had had a millage levied as high as one mill.

Lyndon Increases Officials Pay Scale

Nine people turned out to participate in what Lyndon township supervisor George Bauer termed a "radical" township meeting. Township Clerk Mrs. Charles Fuhrmann indicated that most people who did show up at the meeting discussed primarily the road situation, and pay of their officials.

Residents were unhappy with their roads, and wanted to voice their complaints.

A budget of \$20,786 was approved, which constituted an increase of \$1,539 over last year's \$19,246 budget. Most of the increase was to go towards a salary raise for the officials, and increased allocations to local fire departments. Lyndon township must pay three different fire departments. Also included in the higher budget was an anticipated increase in the money that must be paid into the Chelsea Land Fill for use of that facility.

This year's budget was helped by the fact that certain expenditures of last year did not have to be repeated this year, as last year the township painted the townhall, and paid off the indebtedness on the voting machine.

Salary increases included a \$50 raise for the supervisor, raising his pay from \$2,650 to \$2,700. He was turned down on a bid for a \$300 increase on his car allowance, as the voters didn't feel that it was justified. Clerk's and treasurer's pay was increased also, partially because of the uniform accounting procedure which townships must adopt this year. This will mean more complete book-keeping, and more work! Hence, the clerk's salary was raised to \$1,900 from \$1,475, while the treasurer's pay went from \$1,475 to \$1,750.

Freedom Holds Line on Salaries

Freedom township reported fewer people than in the past, as 30 residents turned up to meet on Saturday. Freedom residents have supported their local government well in the past years, as township meetings have drawn as many as 35 to 50 people.

A new budget of \$23,500 was adopted, which was a slight increase from past budgets. No wage increases were included in this new budget.

Residents voted to spread solid chlorine on all township roads,

which was included in the budget. Township clerk Harold Eisemann estimated that this year's budget wasn't much higher than last year's because last year's budget included payment for the new township hall.

Freedom township does not carry a property tax millage, and residents voted to keep it that way, for another year at least.

Lima OKs Hiring Professional Appraiser

An "average" turnout of 17 residents of Lima township gathered to approve that township's \$67,000 budget. This new budget is an increase over last year's, although township clerk Leila Bauer claimed that most of the increase will go to hire an outside appraisal firm to re-appraise every parcel in the township and establish a card file on those parcels. The township elected to do this because the present supervisor is not a qualified appraiser, and starting next year, all tax assessments must be made by qualified assessors.

Salaries of township officials were increased. Supervisor's salary was increased from \$2,750 to \$3,000, while the treasurer's salary climbed from \$2,500 to \$2,750. Township clerk will receive \$2,650 for the coming year, an increase over the \$2,250 received in the past. Trustees will receive a salary of \$400 from the township, which is a change over from the former method of paying them \$20 for each meeting.

Township residents voted to continue to levy one-mill property tax as per last year to defray expenses of the township.

Dexter Discontinues Special Police Patrol

Four times the average turnout to a Dexter township meeting turned up Saturday afternoon to discuss township business, John Tandy, township supervisor said. Approximately 30 people met to discuss many problems and to support Ralph Parker, township law enforcement officer. Parker was released from his position because of budgetary reasons, causing much controversy at the meeting.

Tandy indicated that the township is in a difficult position caused by all the recreation lands that lie within its boundaries. He estimated that more than 20 percent of the township is park land owned either by Churon



YOUNG LADIES CONFIRMED: Palm Sunday at the First United Methodist church are, front row, from left, Cindy Giffin, Lois Butler, Debbie Packard, Pam Blackwell; second row, the Rev. Clive Dickens, Karen Romine, Ann Kalmbach, Mary Beth Allen, Kim Dresch; third row, Sue Palmer, Sara Johnson, Debbie Conklin; fourth row, Shelly Porath, Jodi Daniels, Sue Morrison, Chris Boyer, and Sue Stoner. Not included in this picture, but also confirmed, was Merry Hoffmeyer.



NEWLY-CONFIRMED MEN of the church, following Sunday's services, at the First United Methodist church of Chelsea include, front row, from left, Matt Boyer, Rob Winans, Don Morrison, Joel Power. In the second row, same order, are the Rev. Clive Dickens, John Winans, Don Collins, Mike Stoner, Tim Collins. Third row, Howard Schenk, Duane Luick, Jim Boyer, Curt Winans, John Storey. Fourth row, Dave Stoll, Doug Lorenz, Terry Ellenwood, Perry Johnson, Rick Gaunt, and Dan Schaeffer.

Methodists Confirm Largest Class in History of Church

A near capacity congregation of approximately 400 persons attended confirmation ceremonies Palm Sunday, April 4, of the largest class of young people ever confirmed at the First United Methodist church in Chelsea.

The Rev. Clive Dickens, pastor, administered the traditional "laying-on-of-hands" to 38 youths in a ceremony which climaxed three months of intensive study for them.

Included in the class' preparation for confirmation was the study of the life of Christ, according to Mark, forms of worship, history of Methodism, the Bible, and the subject, "What It Means To Be A Christian."

Following a confirmation message, entitled "The Crowd, the Christ, and the Christian," the Rev. Dickens invited the class to come to the chancel rail, as the congregation joined them in singing "Jesus Calls Us." Following questions addressed to the class, members of the group were called individually to the kneeling rail at the altar where the confirming "laying-on-of-hands" took place.

Service closed with the confirmation dedication hymn, "Be Thou My Vision, O Lord of My Heart."

Those confirmed at Sunday's service included Merry Hoffmeyer, Shelly Porath, Jodi Daniels, Sue Morrison, Chris Boyer, Sue Stoner, Sue Palmer, Sara Johnson, Debbie Conklin, Karen Romine, Ann

Kalmbach, Mary Beth Allen, Kim Dresch, Cindy Giffin, Lois Butler, Debbie Packard, Pam Blackwell, Dave Stoll, Doug Lorenz, Terry Ellenwood, Perry Johnson, Rick Gaunt, Dan Schaeffer, Howard Schenk, Duane Luick, Jim Boyer, Curt Winans, John Storey, John Winans, Don Collins, Mike Stoner, Tim Collins, Matt Boyer, Rob Winans, Don Morrison, and Joel Power.

Rod & Gun Club Sponsoring Youth Hunting Safety Course

Chelsea Rod & Gun Club, in conjunction with the State of Michigan and the National Rifle Association will be offering a "Hunter Society Course" this spring to all youngsters who are ages 12 to 16. The course, which was drawn up by the National Rifle Association and the State of Michigan, complies with a new state law that all persons applying for their first hunting license must have completed a course in hunter safety.

All instructors in this course are certified, Gary Wortley, chairman of the program stated this week, by the Department of Natural Resources, and the National Rifle Association. Instructors of this course will be Gary Wortley, George Padgham, Robert Rush, Gary Bentley, and Doug Warren.

The lessons, which have not yet been scheduled for any dates, will be one hour long. The course will include four lessons, and five free skeet shots at the new Rod & Gun Club rifle range. Basic handling and shooting of rifles will be featured in the series, Wortley explained, and the classes will be small, kept to a maximum of 10 in each class.

Fathers are invited to attend the meetings to watch their sons, and be able to advise them in future "field" situations.

A slight fee will be charged for the course, Wortley said, although the entire fee will be turned over to the state of Michigan to meet certification requirements for each youngster. Rod and Gun club facilities, and the instructors' time is donated free.

Those who are interested in signing up for this course, or who have questions may contact Gary Wortley. A registration blank appears in an advertisement in this issue of The Standard.

Mrs. Agnes Mullen, the former Agnes Czapl, of Grass Lake, and now residing in Fenton, has been hospitalized with a heart attack. She is at McLaren General Hospital, Ballinger Rd., Flint.

Good Friday Service Starts Holy Week

Union Community Service Will Be At Methodist Church Friday Afternoon

Chelsea Ministerial Association will hold a community Good Friday service once again this year. The joint effort by a number of churches will be what the Rev. Clive Dickens described as a "real experience of worship through the medium of the word, and music." Dickens is pastor of the host church, Chelsea's First United Methodist church.

Toward this end, a number of soloists from several churches, including the Methodist church, Congregational church, St. Paul United Church of Christ, and the Chelsea High school choir, under the direction of Miss DiAnn L'Roy, will combine talents and present several musical selections including "Grant Us Thy Mercy," by Lotti, and "Behold the Lamb of God," from Handel's Messiah. Sermon for the service will be

(Continued on page five)



REV. DAVID KLEIS

Churches Set Easter Worship Services

Holy Week is drawing to a close, and this Sunday, April 11, is Easter Sunday 1971. Local churches have planned many festive events to celebrate this annual spring festival of the Christian church, and put an end to the 40 days of Lent.

Holy Week and Easter services will begin at St. Paul United Church of Christ with the Maundy Thursday service of Tenebrae, this evening, and will include the Good Friday service, and end on Easter Sunday with a sunrise service at 6:30 a.m., followed by the traditional Easter Breakfast at 7:30 a.m., and an Easter Communion service at 10:30 a.m. The Easter service will be highlighted by a first person sermon, which, according to the Rev. Warner H. Siebert, will introduce the disciple Peter, speaking on the topic, "He Is Risen."

Reservations must be made for the Easter Breakfast immediately, the Rev. Siebert claimed, and persons interested may phone 475-2545.

Tenebrae, which is sometimes called "the extinguishing of the lights," is a service designed around candles representing the 12 disciples, the Rev. Siebert explained. The candles are extinguished successively as the Passion story unfolds through scripture and music to symbolize the flight of Jesus' disciples as they deny him and turn away. Holy Communion will be served at this service.

"The St. Paul Chancel choir will sing two anthems," stated director of music, Bruce Galbraith, "All In the April Evening," by Robertson, and "Darkness Was on the Earth," by Haydn-Hallagan."

Easter morning Sunrise Service will be youth oriented, with the use of an interpretive choir, a sermon dialogue between pastor and youth. The musical offering will include "Hosanna" from the contemporary rock opera, "Jesus Christ, Superstar," "Kum-Ba-Yah," and "Shalom" by the Youth Choir, directed by Toby Butcher, and accompanied by Win Kanten, guitar; Larry Gorton, percussion; Bruce Galbraith, bass, and Miss DiAnn L'Roy.

This service will be followed by Easter Breakfast, a traditional meal at St. Paul's, sponsored by the Senior High Fellowship, with Mr. and Mrs. Tim Whitesall as advisors.

Music at the 10:30 a.m. communion service will feature "This Joyful Easter Tide," by Shaw-Parker, performed by the Chancel Choir; "Ticomb's 'Christ the Lord is Risen Today,' with trumpet accompaniment and 'Alleluia,' by Young, Don Renz will perform as St. Paul's interim organist for the last time at this service. He will conclude the service with Widor's 'Toccata' movement from the Fifth Symphony. Ben Helmeke will begin as St. Paul's regular organist starting April 18.

At the First United Methodist church, the Senior Choir will present "Requiem" by Faure, at 7:30 p.m. this evening, in celebration of Maundy Thursday.

Soloists for the performance will be Lois Garman, the Rev. Clive Dickens, and James Hoffmeyer. Guest harpist from the University of Michigan is Charlotte Lytle, while the flute solo will be played by Sherri Plank. Organist for the evening will be Miss Connie Baur, while June Warren will direct the senior choir.

A candlelight communion service will follow the singing of the "Requiem."

At the Easter Sunrise service to be held at 6:30 a.m. at Cavanaugh Lake, the Intermediate Choir, under the direction of the Rev. Clive Dickens will sing.

The Sunrise service will be followed by an Easter Breakfast in the Social Center, at 8 a.m. At the 10 a.m. service, the Adult Choir will perform "The Strife Is Over," and the Combined Choir, the Senior Choir, Youth, and Intermediate Choirs, will sing "Beautiful Saviour."

Junior and Primary Choirs will sing also, under the direction of Miss Connie Baur.

Following the Community Good Friday services at the First United Methodist church, there will be a presentation of a Good Friday Cantata presented at Beach Junior High school. "Hallelujah, What A Savior," a John Peterson cantata, will be presented Good Friday evening, 7:30 at the Junior High school auditorium. This will be presented by the "Area Singerspiration" church choirs from Immanuel Bible, Chelsea Baptist, North Sharon Bible, Faith Community, Stockbridge Baptist, and Iron Creek churches. Mrs. Frank Frinkle is directing this group.

Most of the area churches have added special services for this upcoming Easter season. St. Barnabas Episcopal church will have a Maundy Thursday service this morning, with Holy Communion at 9:15 a.m., followed by a vigil, and Evening Prayer, this evening, at 8 p.m., followed by a vigil.

Good Friday there will be services at 12:15 a.m., with the recitation of the Good Friday liturgy.

(Continued on page five)



MASTER EGG DYERS, these Jaycees members, and wives, have colored 1,500 eggs for Saturday's Easter Egg Hunt, to be held Saturday morning, April 10, at 10 a.m. on the High school athletic field. Pictured above are, from left, Dan Eder, Mrs. Dick Call, Mrs. Mitch Zink, Gale Rouse, and

Mrs. Rouse. Children from the pre-school level through the second grade are eligible for this annual event, according to Mitch Zink, chairman of the project. Prizes will be awarded to the lucky ones following the hunt.



Washington Report by Congressman MARVIN L. ESCH

When the 92nd Congress convened, I had the opportunity to become a member of the House Science and Astronautics Committee, one of the most acquisitive assignments on Capitol Hill. More specifically within the committee structure, my subcommittee assignments are Science, Research and Development, which has the direct responsibility for overseeing the nation's science programs, and the Advanced Science and Technology Subcommittee, which concerns itself with long-range programs in space research, particularly in earth resource applications.

In response to this directive and the recognition that much of the technology developed to meet aerospace needs is applicable to broader public needs, NASA has generated a tremendous amount of scientific and technical knowledge for a great variety of disciplines and fields. Our communication and weather satellites are a direct result of the space program while a great many other side benefits have been in biomedicine. For example, clean room technology developed for spacecraft hardware has been adapted to hospital operating rooms. Thanks to NASA research, a heart attack victim can now have his EKG tracing analyzed by doctors miles away while he is on route to the hospital. Additionally, a small sensor has been developed which monitors the breathing of critically ill patients and can signal an alarm to a nurse or doctor in an adjacent room. These are but a few examples of how NASA research discoveries, via our space program, are being applied to our medical needs.

Undoubtedly, throughout the country there exists an obvious need for an intensification of efforts to apply NASA's technological capability to the solution of many other unmet human and com-

munity needs like water and air pollution, transportation, housing, and crime.

Technologies can play key roles in meeting the water pollution crisis with innovative methods to remove phosphates from wastes and the development of filtration processes as well as water and sludge recycling systems.

Equally as dangerous is the matter of air pollution. New technology to assess its effects on the human body, as well as pollutant sensors and improvements in engines and gas turbines, would go a long way toward eliminating this unpleasant and irritating problem.

In the last 25 years, the use of automobiles has risen nearly 300 percent. Buses have increased 50 percent. At the same time, the number of frustrated motorists and passengers has spiraled. There is a real need for a technological infusion and the development of a systems approach to urban transportation.

The 1200,000 new housing units constructed each year is not the whole answer to our housing requirements. There is a great shortage of low and medium-priced housing. New techniques could help ease this gap.

Dealing with the criminal element, there is also the necessity for technological advancements, especially with fingerprinting systems, improved accident investigation methods, and automatic systems to locate stolen automobiles. This need was recently underscored by the Commission on Law Enforcement and Administration of Justice.

It was General Douglas MacArthur who once said, "When science and technology grow, they complement the human race." We must continue to explore new and better ways to make use of abstract information and new technology to solve the myriad problems that face a growing population.

Uncle Lew from Lima Says:

DEAR MISTER EDITOR:

What ever come of the idea of taxpayers sending in their returns in envelopes of certain colors that would tell the Government what income bracket they fell in? I hope it was forgot, but if there's a vote in it you can rest assured the plan will pop up again one of these days.

Actual, Mister Editor, for all I know they may already have a code color for different incomes. I never pay that much attention. That is one advantage to not having enough income to rate a color. We try to keep the taxes paid up on our little place, and that don't leave much income to be taxed these days.

The fellers was discussing all this spying by the Government Saturday night at the country store, and the talk got around to Senator Sam Ervin's work to keep a little privacy for the private citizen. The senator, allowed Clem Webster, ain't having a easy time of it.

Clem had saw where Senator

Ervin reported the Government has final admitted that computers can make mistakes, and that citizens can appeal to get computer errors changed. The trouble is Clem allowed, Government computer centers are free to exchange all kind of personal information about anybody, and if one of them machines makes a mistake, the same mistake is recorded in a dozen different places. This way, a citizen don't have much chance ever getting his record straight.

The senator is trying to get out fits like gas companies to admit their computers ain't perfect, and he says this is harder than showing the Government the light. Onct a computer sends a feller a wrong bill, it's cheaper in the long run to pay it than to fight it, Clem said.

The way the Government is rounding up things about us, it's hard to be surprised at what they think of. But this color coded envelope idea might catch on and spread to other collecting business. It would be sompin, fer instants, if the churches started sending out an envelope with two red stripes to ever member that ain't darked the doors in six month. And what if banks had three red stripes fer them that had got a couple months behind in their payments?

Practical speaking, Mister Editor, computers probable do some good and don't cause no more trouble than coded envelopes would. I see computers is used to match homeless younguns with folks that want to adopt em, to match boys and girls fer dates and to keep Social Security records.

Our lives from cradle to grave is jest little holes in cards stored everywhere from Washington to the loan companies.

Yours truly,

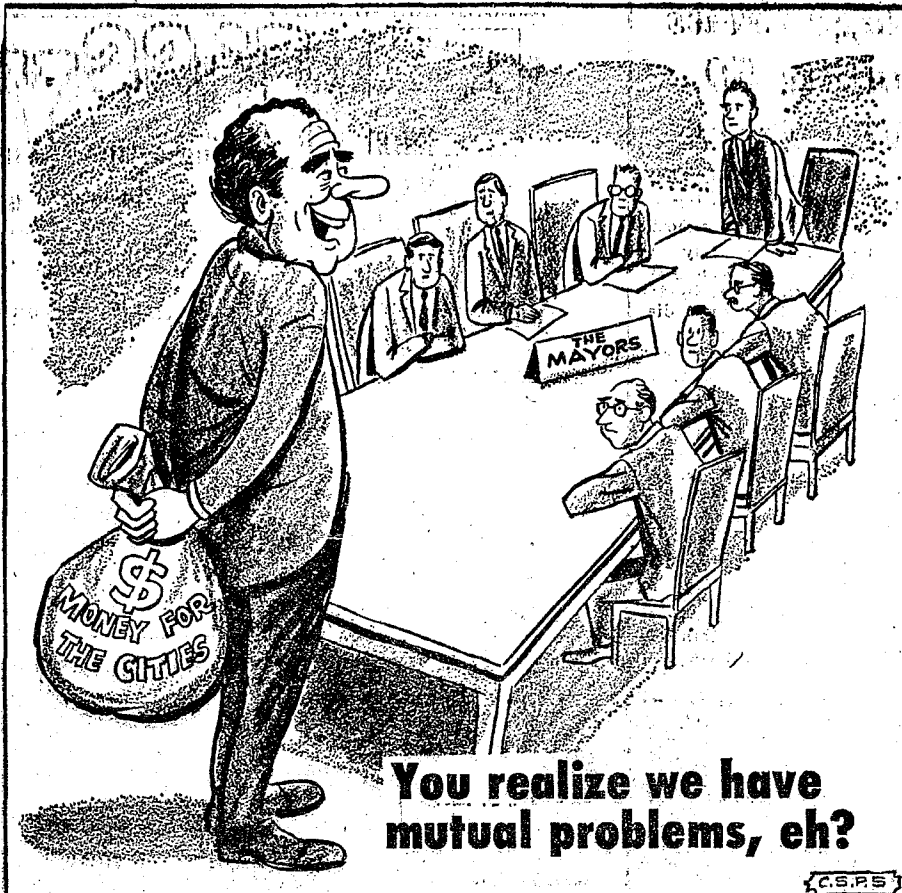
Uncle Lew.

**Deadline Is Friday
To Sign for Wheat
Feed Grain Programs**

Producers of feed grains and wheat are reminded that April 9 is the last day to sign-up in the 1971 programs.

There are no restrictions on plantings—if you are overplanted on wheat or have planted no wheat and you intend to plant more corn than your base—you are still eligible to sign up in the program.

Check with your ASCS office by April 9 for program details.



MICHIGAN MIRROR

By Elmer E. White, Secretary, Michigan Press Association

Taxes Still Rise

There's been much noise about property tax relief in recent years from both the owners who pay and the politicians who collect property taxes.

But that noise hasn't translated into much action when one looks at the latest figures on property tax collections in the state.

During 1970, all units of local government in Michigan levied a total of \$1.874 billion in property taxes. This is an increase of \$213 million over the previous year alone.

The \$213 million represented an increase of 12.85 percent.

At the same time, the average tax rate on all taxes levied was \$48.62 per \$1,000 of assessed valuation.

That represented an increase of \$1.30 per \$1,000 of assessed valuation over the 1969 average.

Averages are compiled each year by the State Board of Assessors, who must find the average so it can decide what to levy against public utilities whose property taxes go to the state. Last year's average is the rate which will be levied this year.

While they show that property tax relief certainly hasn't arrived, these figures also show how difficult it is to make a substantial cut in property tax collections if the cut must be made up of other taxes.

Gov. William G. Milliken has already proposed raising the personal income tax in Michigan from 2.6 percent to 3.6 percent with corresponding increases in the corporate income tax and the financial institutions tax.

When he made the recommendation, he estimated the package increase would yield \$120.5 million in its first six months of operation. Though there would be a few minor increases over a year period, that is roughly \$260 million per year for what is known as a "unit" of income tax—1 percent personal, 2.2 percent corporate and 3 percent financial institutions.

In order to wipe out the property tax in Michigan, more than seven "units" of the income tax would have to be enacted.

Assuming the Governor's proposals are enacted, since they are needed to keep the state solvent, adding another seven units would push the personal income tax in Michigan to 10.6 percent, the corporate income tax to 23.2 percent and the financial institutions tax to 31 percent.

If you think the screams are loud now, imagine what they'd be

if that were tried! So any discussion of property tax relief really boils down to a decision of how much, if any, income tax increase people would accept to get property taxes lowered.

Real "property tax relief," then, appears to be down the road.

Overseas Sales Anticipated

Since the Japanese took so completely to the American game of baseball, the Michigan Department of Agriculture has decided to see what they think of cherry pie.

The department is helping line up Michigan exhibitors for the Mid-America Food Show, to be held in Tokyo next week (April 12-17). Four Michigan firms decided to demonstrate their wares.

The displays will range from hams, bacon and luncheon meats to fruit concentrates, plums and, of course, red tart cherries.

This very important opportunity permits exhibitors to get their produce in front of Japanese buyers, since about 2,000 food buyers from throughout that nation will be at the event.

"Markets abroad are essential to Michigan if our agricultural industry is to operate on an economically sound basis," explains state agriculture director B. Dale Ball.

"By developing overseas trade, Michigan growers and processors can contribute significantly to the state's economic growth. Today, the whole world is our market place."

Dr. Ira Polley Honored

East Lansing—Dr. Ira Polley, a special consultant to the president of Michigan State University, was honored recently by one of the nation's most prestigious educational groups.

Dr. Polley was cited by the Horace Mann League for "dedication and service to public education."

JUST REMINISCING

Items Taken from the Files of The Chelsea Standard

4 Years Ago...

Thursday, April 13, 1967—

Members of the Chelsea High school varsity track squad include Gary Larson, Ken Blaess, Steve Slane, Rick Slane, John Bergman, Mike Funderburgh, Tom McGaw, Steve Eresten, Mick Schnaltd, Bob Dove, Larry Porath, Howard McCalla, Jim Boylan, Tom Tibb, Jim Poertner, Ken Dove, Doug Weatherwax, Larry Blackwell, Alan Boyce, Richard Miller, Tom Smith, Chris Collins, Paul Lancaster, Lance Burghardt, Larry Gaken, Ron Morley, Keith Kusterer, Mike McGinn, Gary Ellenwood, and Mike Lehmann. Assistant coach this year is Bob Pursell, and head coach is Bert Kruse.

1967 varsity baseball team members include Chip Winans, Mike Gaken, Mike Harvey, Rod Houle, Jeff Reynolds, Roy Holliday Greg Stephens, Craig Houle, Tim Eise-man, Chuck Reed, Jim Lyleria, Ryan Smith, Dennis Kytte, Bill Harvey, Danny Allen, and Coach Carl Genske.

Donald N. Hinderer, son of Mr. and Mrs. Norman Hinderer of 4480 M-52, was recently elected an officer of the Agriculture Council for the coming year at Michigan State University.

Marine Captain Jerry Platt, son of Mrs. Harriet J. Platt, of Chelsea, and brother of Mrs. Howard Wahl of Grass Lake, has been awarded a gold star at Danang, Vietnam. He received the medal "For heroic and meritorious achievement in aerial flight."

Senior Miss Seamstresses who won honors in the 4-H district Dress Revue for the Chelsea-Dexter area were Paige Johnson, Norrene Lampe, Helen Walski, Jill Lantis, Jeanne Hinderer, Linda Salter, Arlys Wiseman, Susan Hines, Marilyn Hinderer, Charlene Powers, and Cynthia Niehaus. Judges for the evening were Sue McCalla, Mrs. John Woltring, and Mrs. Fred Patterson.

Byron Pearson, son of Mr. and Mrs. Willard D. Pearson, 18940 Old US-12, appeared Sunday on a Bell Telephone program featuring the "Sights and Sounds of New Orleans." He is a second-chair trumpet player with the New Orleans Symphony.

Robert Updegraff has been elected president of the Chelsea Jaycees. He and eight other newly-elected leaders will take office in installation ceremonies Saturday, April 22, in Ann Arbor.

14 Years Ago...

Thursday, April 11, 1957—

Seventh grade roundballers won only two of the six games they played this past season. Their winner games were with Dexter and with Manchester. The seventh grade squad includes M. Misailedes, D. Ousley, A. Schauer, R. Fletcher, D. McLaughlin, N. Fletcher, A. Fletcher, L. Cattell, D. Fraser, D. Myers, M. Steger, W. Abdon, G. Cattell, and Duane Weiss.

Candidates for the 1957 baseball team's various first string positions include pitchers Bob De-Fant, Jim Baxter, Hugh Weinberg, and George Mayer; infield: Ed Wenk, George Staffan, Odie Richardson, Frank Frederick, Matt Murphy, Marty Matrol, Don Ferguson, Charles Cameron, George Wilson, and Jim Klobuchar; outfield: Silas Hopkins, Don Wood, Charles Mosier, John Meehan; and catchers: Loren Keizer.

Local television viewers were surprised Friday evening, when a Chelsea area man, Louis Ramp, appeared on the "Treasure Hunt" program. Ramp operates a milk farm on Clear Lake Rd.

A class of eight boys and five girls will be confirmed at St. Paul Evangelical and Reformed church Sunday by the Rev. P. H. Grabowski. Those in the class are: Alvin Nixon, Daniel Mayer, Darrel Kenneth Larson, Alwyn Hind-er, Sherry Eise-mann, Darlene Mappys, Judith Martin, Marketa Young, Carolyn Bareis, Allen-Hind-er, Larry Koch, Peter Flintoff, and Alton Nixon.

A parents night open house has been scheduled for North and South schools. Teachers' committee at the high school for the event which will take place Tuesday evening, April 16, includes Mrs. Sue McFarland, of the commercial department, chairman, Mrs. Myrene Dammann, home economics teacher, and Miss Joan Weiss, librarian. Art displays will be under the supervision of Mrs. Carol Freeman of the art department. Eugene Shroyer, student council advisor, has selected the following students to act as guides to visitors during the evening: Jim Grau, chairman; Dennis Gary, Marlene Kuhl, John Eisenbeiser, Dennis Schumm, and Jane McLaughlin.

24 Years Ago...

Thursday, April 10, 1947—

Fourteen members and two guests of the Young Mothers Child Study Club visited the Michigan Children's Institute in Ann Arbor Tuesday afternoon. Members of the party attending were Helen Schneider, Agnes Merkel, Jean McLaughlin, Gertrude Thomas, Jean Sharrard, Dorothy Fisher, Marjorie Niehaus, Marie Riemenschneider, Florence Mayer, Mary Helen Baldwin, Lucille Hoffman, Kathryn Staffan, Mary Weinmann, Margaret Sorensen, and two guests, Bobbie Young, and Anne Flintoff.

The Rev. E. R. Major accompanied six boys, Paul Kalmbach, Fremont Boyer, Carl O'Dell, Buddy Johnson, Bill Lyons, and Bob Matson on an automobile trip to Chicago, leaving here Sunday, afternoon, and returning Tuesday afternoon.

Jayne Proctor, daughter of Mr. and Mrs. Kenneth Proctor, and Raymond Steinbach, son of Mr. and Mrs. Martin Steinbach, both of whom are piano students of Mrs. Gwen Schulz of Ann Arbor, appeared on the Kiddies Program

over radio station WJAB Saturday morning. Jayne played the piano solo "Bells of St. Mary's" by Emmett Adams, and Raymond played "El Choclo" an Argentine tango by A. G. Villoldo.

Easter Sunday was a very enjoyable day for the Burg family when the children, grandchildren, and sons-in-law of Mr. and Mrs. J. Vincent Burg, 27 in all, gathered at their new home on Wilkinson St. Those attending the days events, which included a postponed birthday party for Burg, were Mr. and Mrs. C. Colin Lanning, and children, of Cleveland, Mr. and Mrs. Thomas Guirey and children, of Detroit, Mr. and Mrs. Duane Rowe and children, and Mr. and Mrs. Dudley Foster, and children, Mr. and Mrs. R. Spaulding, and son, Mr. and Mrs. H. Or-bring, and Jerome Burg.

34 Years Ago...

Thursday, April 8, 1937—

The fire department was called to the home of Terrence Foster on N. Main Wednesday afternoon. A shed at the rear of the lot, used as a hut by the boys of the family was burned and a number of tools were destroyed.

Sidney Leeman, of Sharon, who has been a patient at St. Joseph Mercy Hospital, with a broken hip, for the past two weeks, has so far recovered as to be brought home in an ambulance on Sunday. Leeman was caught under a falling tree while working with a company of road men.

The meeting of the Limanecers on Thursday at the home of Mrs. H. A. Pender took the form of an April fool party. Furniture about the house and the pictures were turned topsy-turvy and the guests appeared in costumes with the front at the back and vice versa.

(The world's greatest personalities have been simple, unaffected human beings.)

**EDUCATION
IS OUR
BUSINESS**

Try It!

WASHTENAW
COLLEGE
COMMUNITY

**Howell
Livestock Auction**

The Wise Owl Says Ship to Howell

SALE EVERY MONDAY, 2 p.m.

Phone 546-2470, Jim Franklin
Mason 677-8941

Market Report for April 5

CATTLE

Good to Choice Steers, \$31 to \$32.50
Good Choice Heifers, \$29 to \$31
Ed. Steers, \$26 to \$29
Ed. Steers, \$26 and down

COWS

Heifer Cows, \$28.50 to \$24.50
Ed. Commercial, \$21 to \$23.50
Canner-Cutter, \$19 to \$21
Fat Beef Cows, \$18 to \$20

BULLS

Heavy Bologna, \$26 to \$28
Light & Common, \$25 and down

CALVES

Prime, \$44 to \$48
Good Choice, \$40 to \$44
Heavy Decora, \$40 to \$45
Call & Med., \$26 to \$35

FEEDERS

800-600 lb. Good to Choice Heifers, \$25 to \$28
400-500 lb. Good Choice Steers, \$25 to \$28
300-500 lb. Holstein Steers, \$20-\$24
500-600 lb. Holstein Steers, \$22-\$30
Common-Med., \$24 and down

SHEEP

Woolled Slaughter Lambs:
Choice-Prime, \$25 to \$28
Good-Utility, \$25 to \$28
Slaughter, \$7 to \$11.50
All Weights, \$25 to \$28

HOGS

200-400 lb., No. 1, \$17 to \$18
200-240 lb., No. 2, \$16 to \$17
240 lb. and up, \$15 to \$16
Light Hogs, \$16 and down

Sows

Fancy Light, \$14 to \$15
300-500 lb., \$14 to \$15
500 lb. and up, \$13 to \$14

Boars and Stags

All Weights, \$13 to \$14.50

Feeder Pigs

Per Head \$8.50 to \$14

HAY

1st Cutting, 55c to 70c
2nd Cutting, 70c to 95c

STRAW

Per Bale, 50c to 60c

COWS

Tested Dairy Cows, \$200 to \$400
Tested Beef Type Cows, \$250 to \$350

Established 1871

The Chelsea Standard

Telephone GR 5-3581

Excellence Award By Michigan Press Association
1951-1952-1960-1964-1965-1966

Walter P. Leonard, Editor and Publisher

Published every Thursday morning at 800 North Main Street, Chelsea, Mich. 48118, and second class postage paid at Chelsea, Mich., under the Act of March 8, 1879.

ADDRESS CORRECTION REQUESTED

Subscription Rates (Payable in Advance)

In Michigan:	Outside Michigan:
One Year: \$4.00	One Year: \$6.00
Six Months: \$2.25	Six Months: \$3.50
Single Copies: \$.15	Single Copies: \$.20

Service men or women, anywhere, 1 year \$4.00

MEMBER

NATIONAL PAPER

Founded 1885

National Advertising Representatives:
MICHIGAN NEWSPAPERS, INC.

257 Michigan Ave.
East Lansing, Mich. 48806

DON'T WAIT!

Pick up your XL Seed Corn Now!

Tomorrow may be too late for you to get the varieties and seed sizes you want. See me now. Time is running out.

See Me Today—

LLOYD BOYCE
Phone 426-3565
2791 Dancer Rd. Dexter

DONALD IRWIN
Phone 522-4347
16880 Grass Lake Rd. Grass Lake

Dr. & Mrs. Oscar Sorenson, Rochester, Talk About Electric Heat... and how it protects antique furniture in their Wedgwood Museum.

"...electric heat gives us that uniformity that we need."

Days. Nights. Fall. Winter. Spring. Electric heat is always just right for people, too! Send us your name and address. We'll prove it.

Name _____
Address _____
City _____ Zip _____
180 Service Bldg.
2000 Third
Detroit, Mich. 48226

EDISON

SING-ALONG MUSIC

at
INVERNESS INN

NORTH LAKE

Music By
JIM ROMINE & GARY SCRIPTER

SATURDAY NIGHTS

9:30 p.m. to 1:30 a.m.

YOUR FAVORITE SANDWICHES

SHRIMP, CHICKEN & FISH DINNERS

Pre-Easter SALE

Our Complete Floor Stock of Fine

FURNITURE & APPLIANCES

offered at

BIG REDUCTIONS

to help you get your home spruced up for Easter!

Included are such famous names as Frigidaire ranges, washers, dryers, refrigerators; Krøgher, Tell City, Berkshire and Bassett furniture; Serta mattresses; Downs carpeting; Rembrandt lamps, and many others.

MEABON'S TV, Furniture & Appliances

1170 M-52 South, Chelsea Phone GR 5-5191

MCRC Data Shows Population Centers Have Least Park Area

MCRC officials reported on the five-county area served by the Huron Clinton Metropolitan Authority at their annual meeting, Tuesday evening, March 30. On a county-by-county breakdown, MCRC stated that Washtenaw county has 5.2 percent of the population in this area, while they make 6 percent of the payments. By the same token, the county has 6.9 percent of the parkland.

Wayne county, however, has 59 percent of the population, and makes 56 percent of the payments to HOMA. They have, however, only 21.2 percent of the parkland.

Livingston county has 1.8 percent of the population and pays 1.4 percent of the money into HOMA coffers. They have, however, 4.5 percent of HOMA parkland.

Combined state and Huron Clinton parkland figures show that Oakland county has 40 percent of

the parkland in the region, while it has only 20 percent of the population. Livingston county has 24 percent of State and HOMA parkland, with about 1.3 percent of the population. Washtenaw county has 19 percent of the parkland, and 51 percent of the population.

Wayne county reports 10 percent of the parkland while there is where 59 percent of the area's population lies. Macomb county, which has 13.9 percent of the population, has only 7 percent of the parkland.

Day Use, per acre statistics of HOMA parks show that Kensington, and Stony Creek parks, which both have artificial lakes, have about the smallest number of users per acre. Kensington park has 4,300 acres, with only 605 users per acre, per year. Stony Creek has 3,500 park acres, and tallies only 450 users per acre, per year. Metropolitan Beach, on the other

hand, which provides access to Lake St. Clair, totals 650 acres. Yet HOMA counts 3,181 users per acre, per year.

Ironically, it is the local parks which have equally high amounts of users per acre, per year. Dexter Huron Park, which has 115 acres, counts 1,115 users per acre, per year, while Delhi Park, with only 45 acres has 3,165 users per acre, per year. Lower Huron Metropark, which has 1,000 acres, has 1,302 users per acre, per year.

Hudson Mills, which has only 200 of its 660 acres developed, counts 309 users per acre, per year.

Trees, Shrubs Now Available For Plantings

Archie Bradbury of Dexter, states that the Washtenaw County Soil Conservation District is still accepting orders for evergreen trees and shrubs for the spring planting season.

Distribution of trees and wild-life shrubs has become an annual event for the Washtenaw county SCD. Seedlings are made available to landowners in the interest of promoting conservation plantings. Last year more than 206,000 trees and shrubs were provided to 400 landowners and organizations.

According to Bradbury, tree planting has a number of environmental benefits. Trees may be planted for erosion control, windbreaks, reforestation, Christmas trees and natural beauty. Wildlife shrubs provide food for songbirds and other wild animals in the form of berries.

The Soil Conservation District still has the following trees and shrubs available: Blue Spruce, White Spruce, White Pine, Red Pine, Scotch Pine, Autumn Olive and Multiflora Rose.

For those who would like to do some planting but do not have the time, there are several groups interested in doing both machine and hand planting. In addition, the Washtenaw County Soil Conservation District has several machine tree planters available that may be used for a very nominal fee.

Deadline for ordering tree and shrub planting stock is April 15. Order forms and a complete price list may be obtained by writing or calling: Washtenaw County Soil Conservation District, 6101 Jackson Rd., Ann Arbor 48103.

Village Crews Planting 50 Young Trees

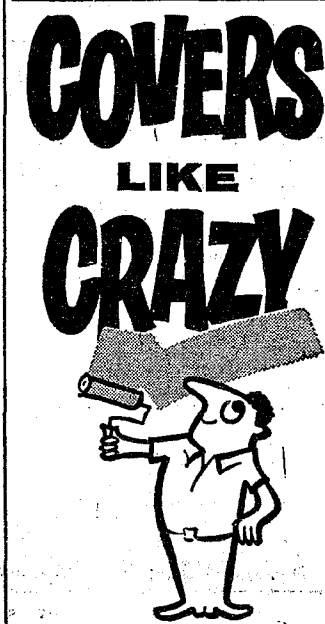
Village of Chelsea will once again plant trees this spring on lawn extensions. Village officials report that approximately 50 trees will be planted this year, to replace trees taken out by the village, or trees that have died due to Dutch Elm disease.

Frederick Weber, village administrator, estimated that 20 to 25 trees have to be taken out by the village each year due to the elm disease, or normal "old age," while some of the younger trees do not make it through a winter.

Thirty-five residents responded to the advertisement the village ran, asking persons who have "bare" lawn extensions to bring the situation to their attention. Hence, coupled with trees already promised to persons who had to have trees cut down within the last year, all the trees have been spoken for.

Red Sunset maple trees will be planted, Weber commented, as this tree was planted last year with very good success. The trees are a hardwood tree, but grow very fast, and the leaves turn bright red in the fall, and stay on the trees a long time.

It is hoped that all new trees will be planted by next week. Delivery was Wednesday, April 7, at which time the crews started putting them in the ground. The new trees cost the village \$500 to purchase, and plant, Weber estimated.



Dutch Boy Nalplex Flat Wall paint—so high in hiding, one coat looks like two.

- Odorless.
- Scrubbable.
- Rolls on smoothly without splatters.
- Soap and water clean-up.
- Hundreds of fashion colors available.

Stop by for Dutch Boy Nalplex today!

Dutch Boy NALPLEX



MERKEL BROS.

Open Mon. & Fri. Until 9
Phone 475-8621

SPECIALS FOR THIS WEEK ONLY

LARGE EGGS . . . 2 doz. 99c
MEDIUM EGGS . . . 2 doz. 89c

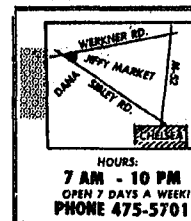
Drive a Clean Car for Easter!
Automatic Brush Car Wash - \$1.00
Open 7 Days A Week

We Will Be Closed from 12 to 3 p.m. on Good Friday and open all day Easter Sunday.

GALLUP - SILKWORTH PUMP & PANTRY

295 S. Main St., Chelsea

Phone 475-7051



Jiffy market COMPLETE SUPER MARKET
BIG ENOUGH TO SERVE YOU.....SMALL ENOUGH TO KNOW YOU!
Corner of SIBLEY & WERKNER RDS....CHELSEA, MICHIGAN

SALE PRICES EFFECTIVE THURSDAY, APRIL 8, THRU SUNDAY, APRIL 11, 1971.

Store Hours Are 7 a.m. to 10 p.m. 7 Days A Week
CLOSED GOOD FRIDAY, 12 NOON TO 3 P.M. FOR CHURCH SERVICE.

HAMS

FARMER PEET'S
HI-STYLE

WHOLE HALF
65¢ lb. 68¢ lb.

Fully cooked, semi-boneless, skinless, shankless.

FARMER PEET'S
BONANZA

99¢ lb.

Fully cooked, boneless, smoked.

HOME-MADE

PORK SAUSAGE . . 59¢ lb.

CHELSEA IS HOLSUM COUNTRY!

GOOD, OLD-FASHIONED

PARKER HOUSE DINNER ROLLS . . . 29¢
Dozen In Pkg.

FINISH YOUR EASTER DINNER WITH THE FINEST DESSERT!

LADY BORDEN'S ICE CREAM 59¢ qt.
BORDEN'S IS THE FINEST ICE CREAM IN THIS AREA!

Large Assortment
Fancy Flavors

Chocolate Double
Butter Pecan Strawberry Swirl
French Vanilla Cherry Almond
Tin Roof Swirl Pistachio Nut
Coffee

CROWN SWEET PICKLES Quart Jar 49¢	GALA DECORATED NAPKINS 160-Count Pkg. 29¢	CREST or COLGATE TOOTH PASTE Large Tube 49¢
---	---	---

SHAMROCK FRESH EGGS U.S. Grade A White, Medium 38¢ doz.	FLECK'S EGG COLORING PLAY KITS - 29¢ box
---	--

U. S. FANCY Delicious Apples 3-Lb. Bag 59¢	CALIFORNIA HEAD LETTUCE Large Head 19¢	VINE FLAVORED Fresh Tomatoes 39¢ lb.
--	--	--

RISDON'S TOP QUALITY MILK

ONE-HALF GALLON 49¢	WHIPPING CREAM Grade A Pasteurized One-Half Pint 25¢	ONE GALLON 88¢
-------------------------------	---	--------------------------

Tops With Any Meal!

COCA-COLA

6 Pint Bottles **75¢**

Get the real thing. Coke.

CIGARETTES Your Choice \$3.39 crtn.	Brighten Up Your Easter Dinner Large choice of fine wines from Michigan, New York, California, Italy, Denmark, Germany, Portugal. Our Beer and Wines Retail at Supermarket Prices.	GARDEN SEEDS 2 LARGE RACKS Start some now to be ready for planting in May or June.
--	---	---

Going Away for Easter? Cut Down on Your Expense!

MARATHON GAS PUMPS

REGULAR **33.9** This is not a cheap gas of low quality. PREMIUM **37.9**

Includes All Taxes Applications available here for Marathon Credit Cards.

CLOSED GOOD FRIDAY FROM 12 NOON TO 3 P.M. FOR CHURCH SERVICES.

OPEN DAILY and SUNDAY 7 a.m. to 10 p.m.

CHS Forensics Team Participates in District

Thirty Chelsea High school students, members of the schools' Forensics team, competed in the District Forensics meet held in Ypsilanti, Thursday, April 1. According to Coach William Coelius, the team came up against much stronger, Class A schools, and one other Class B school, to make the going rough for the afternoon.

Competing with Chelsea were teams from Adrian High school, Ypsilanti, Ann Arbor Huron, Ann Arbor Pioneer, and Saline.

Of the 30 students who participated, Coelius said, all but four participated in the final round of competition. Winners from Chelsea included Ron Sweeney, who placed third in the Children's Literature category, and Patrick Fluck, who placed second in the Boy's Oratory division. They will both participate in Regional competition to be held in Ypsilanti, April 30.

Other third-place winners, who were selected as alternates to Regional competition are Denise Shusser, girl's oratory; Betty McNutt, serious reading; Sue Stock, girl's extemporaneous speaking; and a multiple reading group of six boys, who presented "Inherit the Wind." Ed Koenigster, Tom

Hubert, Ric Foytik, Jon Schenk, Larry Jones, and Glenn Musolf.

Other students who participated in the event included Bob Stoffer, Dwight Bolanowski, Tina Orbring, Sue Blaess, Bob Mester, Cyndy Sawyer, Chick Lane, Dan Gaunt, Bill Schaefer, Sharon Heydlauff, John Bennett, Mike Hergert, Laurie Lancaster, Lynne Houle, Jim Wojcicki, Jane Mann, Joan Schmidt, Jane Haselschwardt, and Pat Ball.

Chelsea Women Visit Two Weeks in Florida

Mrs. Julius Reule and Mrs. Walter Trinkle, of 418 Wilkinson St., returned home Tuesday, March 30, from a two-week stay in Florida. Leaving March 17, the ladies drove to Ocala, Fla., where they stayed, traveling to Silver Springs, and Cypress Gardens before their arrival in Tampa.

In Tampa the women visited the Busch Gardens, Lavery parks, and Treasureland. They also visited friends of Mrs. Reule's who live in that city.

Other sites they visited included St. Petersburg, and the Skyway Channel, Tampa Bay, and the Bay of New Mexico.

Basic First Aid Course Offered By Police Dept.

A basic training course in the arts of First Aid will be offered to local citizens beginning Wednesday evening, April 14. The course, which is to be taught by Thomas Millett, Director of Safety Programs for Washtenaw County Chapter of the American Red Cross, is sponsored by the Chelsea Police Department and Auxiliary Police, in conjunction with the Chelsea Fire Department, Police Chief Meranuck announced this week. It is designed to be a refresher course for local policemen and fire fighters, and will be attended by the members of the Auxiliary police.

All interested citizens are invited to attend these six sessions, which will begin at 7:30 p.m. lasting until 10. There will be a charge of \$1 for the purchase of the textbook, but the course itself is free.

Classes will be held in the Village Council Room.

By 1980 it is estimated personal consumer spending will hit eight hundred billion dollars annually. About 66 percent of the American people will have a real income over \$7,500 a year and one in four will enjoy an income of over \$15,000.

Easter Parade Values

BOYS' & MEN'S PERMANENT PRESS
SHORT SLEEVE SHIRTS
Boys' sizes, 8 thru 16 **\$1.88**
Men's sizes, S-M-L-XL **\$2.88**
All new colors and patterns

WINDBREAKER JACKETS
Water repellent.
Boys' - \$2.88 Men's - \$3.88

BEAUTY MIST HOSIERY
Reg. \$1.00 Hose SPECIAL, Only **79c**
Reg. \$1.75 Panty Hose, SPECIAL, Only **\$1.39**
Reg. \$2.00 Panty Hose SPECIAL, Only **\$1.59**
Reg. \$3.95 Sheer Support Panty Hose SPECIAL, Only **\$3.19**

BATH TOWELS
Reg. \$1.99
Special, Only **\$1.66**

HAND TOWELS
Reg. \$1.39
Special, Only **\$1.16**

WASH CLOTHS
Reg. 59c
Special, Only **46c**

Be Sure To Shop

DANCER'S

The Selection Is Great for Spring!

Ads
Taken
Till 5 p.m.
Tuesday

IT'S EASY TO BUY-SELL-RENT- HIRE & FIND WITH

WANT ADS

Just
Call
GR 5-3581

WANT ADS

The Chelsea Standard

WANT AD RATES
PAID IN ADVANCE—All regular advertisements, 50 cents for 25 words or less, each insertion. Count each figure as a word. For more than 25 words add 2 cents per word for each insertion. "Blind" ads or box number ads, 50 cents extra per insertion.
CHARGE RATES—Same as cash in advance, with 15 cents bookkeeping charge if not paid before 5 p.m. Tuesday preceding publication. Pay in advance, send cash or stamps and save 15 cents.
DISPLAY WANT ADS—Rate, \$1.10 per column inch, single column width only. 8-point and 14-point light type only. No borders or boldface type.
CARDS OF THANKS or MEMORIALS—Single paragraph style, \$1.00 per insertion for 50 words or less; 2 cents per word beyond 50 words. Minimum, 1 inch.
COPY DEADLINE—5 p.m. Tuesday week of publication.

FOR REAL DOLLAR SAVINGS be sure and see us before you buy any new or used car. Palmer Motor Sales, Inc. Your Ford Dealer for over 50 years. 24tf

All Insurance Needs

In the convenience of your own home — or mine

N. H. Miles, Allstate

Call GR 5-8324 after 6 p.m. 45tf

Hearthside Yarn Shop

5450 Conway Road

Yarns, needles, accessories

Free instructions in knitting and crocheting with follow-up assistance.

Orders taken for hand-made items.

Ph. 475-2014 36tf

Watch For Our 1971 Power Equipment ALLEY SALE

We will have money-saver buys in new, used and 1970 models.

See us in our alley, April 16 and 17.

Visit Our Service Dept. and meet Jim Stewart.

Chelsea Hardware

Phone GR 9-6311 42

JR. - SR. PROM

Tux orders should be placed by April 17.

Strieter's Men's Wear

43



BECKER MEMORIALS

6033 Jackson Road
ANN ARBOR, MICHIGAN

WANT ADS

BOARDING, trimming, training. Town and Country Kennels. Jackson Rd. at Baker. NO 3-7200. 74tf

Gem Travel Trailers and Campers

PICK UP COVERS

4" \$100.00

26" \$179.00 and up

Triangle Sales

Chelsea 475-4302 40tf

CLOGGED SEWER

Reynolds Sewer Service

We Clean Sewers Without Digging

Drains Cleaned Electrically

FREE ESTIMATES

2-YEAR GUARANTEE

Phone Ann Arbor NO 2-5277

"Sewer Cleaning Is Our Business—Not a Sideline" 38tf

SEE US for transit mixed concrete. Klump Bros. Gravel Co.

Phone Chelsea 475-2530, 4920 Loveland Rd., Grass Lake, Mich. 440tf

CAR & TRUCK LEASING. For details see Lyle Christwell at Palmer Motor Sales, GR 5-8271. 49tf

KNAPP SHOES

For Cushion Comfort

Robert Robbins

475-7282 48tf

TV on the Blink?

Call Porter's TV Service.

Reasonable TV house call rates, repairs in the home if possible.

Complete sale and installation of antennas. Also a fine selection of Solar color Admiral TV sets on hand. 3 year warranty on picture tube, 1 year free service.

For prompt, courteous service on all makes of color or black & white call

PORTER'S TV

475-8380

212 Buchanan Chelsea 46

TRAP SHOOTING

Chelsea Rod & Gun Club Grounds

EVERY SUNDAY

BEGINNING APRIL 11

10 a.m. 'til shooting is completed.

OPEN TO PUBLIC 43

FOR SALE—White Embden geese and goslings, ducks and ducklings baby chicks, duck eggs. Ph. 475-7617. 42

4-Bedroom Rancher For Sale

Located at 3120 Peckins Rd., between Chelsea and Manchester 2.7 acres of yard. Big, spacious workshop. Asking \$29,500.

PHONE 475-7390

or 665-4141, ext. 448

or (517) 781-1169. 43

STANLEY'S TREE SERVICE — Trimming, removals, cabling, bracing, surgery, etc., and free estimates. Phone 428-8907. 46

FOR RENT—5-room furnished apt., downtown Chelsea. Quiet couple preferred. No drinkers. References plus deposit. Phone 475-7541. 41tf

WANT ADS

ROBERT PATRICK for home improvement, building and maintenance. Ph. 475-7480. 45tf

HAMMOND ORGAN teachers wanted to teach in their own homes. Call Grinnell Brothers, Ann Arbor, 662-5667. 34tf

CALL FRANK for all your carpet cleaning jobs, morning or week-end. Needs only 3 hours to dry. Only 10¢ per square foot. Phone now for free estimate, 761-4328. All work guaranteed. 33tf

REDUCE EXCESS fluids with Fluidex, \$1.69. Lose weight safely with Dex-A-Diet. At Chelsea Drug. 45

PIANO TUNING, Chelsea and area. Facilities for reconditioning and rebuilding. Used piano sales; reconditioned grands and verticals. E. Sklund, 428-4429. 50tf

Contractor Servicing Chelsea, Dexter and Manchester Areas

Complete Home Remodeling Inside and Outside

Specializing in extra living space, recreation rooms, kitchens and

panelling. Installing all aluminum products, 5" eavestroughs, custom-made awnings, windows and doors, aluminum siding in many selected colors and styles.

Please Call

DALE COOK

Chelsea 475-8863 20tf

COMPLETE SANITATION SERVICE—Septic tanks cleaned and repaired. Licensed and bonded. Call anytime, Munnith (517) 596-2948 or (517) 596-2116. 48

USED CARS

'70 Ford 4-dr.

'69 Mustang Fastback

'68 LTD 2-dr. Hardtop. air

'68 Chev 2-dr. Hardtop

'68 Galaxie 500 2-dr. hardtop

'68 Falcon 2-dr.

'67 Ford wagon. Factory air.

'66 Buick 2-dr. hardtop

'65 Galaxie 500 2-dr. hardtop

'63 Ford convertible

TRUCKS

'69 Ford 3/4 ton camper special

'68 Ford 1/2 ton

'67 Ford 1/2 ton (3)

'67 Chevrolet 1/2 ton

'65 Ford 1/2 ton

PALMER FORD

Open Mon., Wed., Thurs., Till 9:00

Chelsea GR 5-3271 40tf

Seamless Aluminum Gutters

White or brown. 5-Year Guarantee.

WILSON METAL SHOP

428-8468 - Manchester 40tf

PATCHING AND PLASTERING. Call 475-7489. 33tf

CEMENT WORK — Poured walls, basements, retaining walls, floors, drives, and sidewalks. Cecil Caudill, 517-851-3847. 44

FURNISHED 1 bedroom, bath, living room and kitchen, utilities furnished. References. No pets or children. To see call 665-6801. 44tf

TIMOTHY HAY and wheat straw for sale, 45 cents and 65 cents per bale, less on quantity (round baled straw 30 cents per bale) for small quantities. Call nights, 475-8334. 42

'68 FORD F-250 Camper Special for sale. Phone Stockbridge (517) 851-8190, after 5 p.m. 42

FOR SALE

HALF ARABIAN registered 6-year-old mare, dapple grey, trained for show and pleasure riding.

APPALOOSA registered 9-year-old mare, black gelding, pleasure riding horse.

WHITE GELDING, 6-year-old.

BUCKSKIN COLT, gelded, two years old.

SADDLES, best offer, private.

475-7357 42

FOR RENT—1-bedroom efficiency apartment 2 miles east of Chelsea, single man preferred. \$100 per month. Phone 475-2828. 42

FOR RENT—Lakeside Apt., 1 bedroom, no children or pets, \$150 per month, 1/2 utilities, first and last month's rent. References. Phone 871-1681 after 6 p.m. 40tf

ELECTROLUX VACUUM CLEANERS

SALES and SERVICE

JAMES COX

Ph. 428-2931 or 428-8221

Manchester



"I'm afraid I'm gonna have to buy that power lawn mower my wife saw in the Standard Want Ads—vitamins didn't work!"

WANT ADS

EXPERIENCED PAINTER looking for part-time work, interior or exterior. Reasonable rates, free estimates. Phone 475-7878. 32tf

Real Estate For Sale

LISTINGS NEEDED

Call

Kern Real Estate

Phone. 475-8563 39tf

WANTED TO RENT—Young married couple seeks one-bedroom unfurnished apartment in apartment building or house for fall. 769-2469. 42

FOR SALE—Corn silage (16 by 55). Ph. 426-4198. 42

FOR SALE

5.9 ACRES, Brooklyn area, 4-bed-room home, kitchen, dining "L," with fireplace, two baths, attached garage. Free trees. \$41,500.

10 ACRES north of Grass Lake, 2-bed-room home, kitchen, dining "L," one bath, \$20,000.

16 ACRES, Brooklyn area, situated back from highway, 2 or 3 bed-rooms, fireplace, kitchen, den, two baths, radiant heat, well landscaped with a variety of trees. Private pond stocked with fish, one small shed. Must be seen to be appreciated. \$65,000.

29.9-ACRE FARM, Norvell, rolling land with trees, 3-bedroom home, living room, fireplace, walk-out basement, one small shed, frontage on lake. \$55,000.

Also have lake property available.

Willis Real Estate

(517) 622-8481

or call Helen M. Weiss, 663-9160 42

Real Estate For Sale

BRAND NEW — 3-bedroom brick ranch. Perfect country view. 2 ceramic baths, 2 fireplaces, large (unfurnished) rec-room, 2-car attached garage. \$48,500.

LOW DOWN PAYMENT — Small 3-bedroom home. Spic and span condition. Fenced yard. \$19,900.

7 1/2 ACRES — All inside village limits. Has 3-bedroom house, garage, 745 feet of railroad frontage. \$30,000. Terms.

BUILDING LOT — One mile east on Old US-12. 135 feet of frontage. 1 1/4 acres. \$40,000.

10 ACRE LOTS—Several to choose from. 2 1/4 miles out. From \$7,500 up.

CLARENCE WOOD BROKER

Efficient PERSONAL Service

646 Flanders St.

Phone 475-2093 42tf

Rarin' To Go...

Your battery, that is, after our dependable recharging!

We'll put your old battery back into "championship form," ready to give you many months of peppy starts, dependable service.

PURE OIL PRODUCTS

JIM'S PURE SERVICE

Thos. — Batteries — Tune-Ups — Brake Service — Wheel Alignment

PHONE 475-2822 501 SOUTH MAIN

WANT ADS

MEL HARTMAN, residential builder. Free estimates: houses, garages, kitchens. Flat work and roofs. Call 878-6514. 15tf

TRAVEL TRAILERS — 13-ft. and up; 10x55 ft. trailers. John R. Jones Trailer Sales, Gregory, Mich. Phone 498-2655. 43tf

WORK SHOE HEADQUARTERS

Famous Red Wing Brand

\$12.95 to \$26.95

Foster's Men's Wear

34tf

ALCOA SIDING with Remodeling Since 1938. Prompt service, professional workmanship. William Davis Contractor, Ann Arbor, Mich. Estimate, no obligation. Phone (313) 663-6635. Completed work near you. 42

USED TRACTOR TIRES—Large inventory on hand. Also used passenger - truck - grader tires. Jackson Tire Brokers, M-106, Munnith, Mich. Ph. 596-2825. 32tf

GARAGE SALE—Saturday, April 17, 781 Taylor St., Chelsea, beginning 9 a.m. Coffee table and corner table, both blond, \$5 ea.; sectional davenport, \$15; 1/2 size bed, springs and mattress, \$15; double wash tubs on stand, \$15; dishes, picture frames, jewelry and many other articles too numerous to mention. 42

FOR SALE—1969 Volkswagen Karmann Ghia and 1969 Volkswagen Bug, both in excellent condition. Phone 475-8091 or 475-1150. 42

RUMMAGE SALE—April 23, 24, at Sylvan Town Hall. Sponsored by Chelsea Rebekah Lodge No. 130. Call 475-8893 or 475-7434 for pick up of rummage. 44

CUSTOM BUTCHERING, and meat processing. Beef only. Beef for sale by the side. Service Meat Processing, Manchester, Michigan. Phone 428-8530. 45

FOR SALE—Repossessed sewing machine, deluxe zig zag, in walnut console cabinet, buttonholes, etc. Assume balance. New machine guarantee. Adrian Viking Sewing Center, 127 S. Main, Adrian, Mich. Ph. (313) 263-7891. 42

EVERGREENS AND SHADE TREES

Dig your own or we dig.

LOW PRICES

Open Fridays, Saturdays and Sundays, 9 to 3

HEISE'S

North side I-94, Exit 162 at Fletcher Rd.

Phone Ann Arbor 971-2244 42

WORK SHOE HEADQUARTERS

Famous Red Wing Brand

\$12.95 to \$26.95

Foster's Men's Wear

34tf

WANT ADS

FOR SALE — Trailers, 8x10, steel plated with stake pockets, complete with racks, 7.50x20 inch 8-ply tires. Capacity 4 tons. 7 1/2x3 1/2 complete with racks, steel floor. Ideal for vacations. Capacity 3,000 lbs. Fireplace wood. 2-year seasoned, oak and hickory hardwood. 4x8x18". Phone 475-7729. 18

Custom Kitchen Cabinets

and

Formica Tops

Made to Order

475-2857 32tf

For Low Cost Floor Covering

We have small and large pieces, ends of rolls, etc., of linoleum and carpeting at close-out prices.

Many sizes and colors to select from.

MERKEL BROS. 40tf

G. G. HOPPER

Building Contractors

Phone GR 5-5581

Gregory 498-2148 40tf

VACUUM CLEANERS — Electro-lux, authorized sales and service. James Cox, Manchester. Ph. 428-2931 or 428-8221. 42tf

GARAGE SALE — Starting April 12, every day till things sold. No Saturdays or Sundays, 8 a.m. until dark. 501 Territorial, Manchester, Mich. 428860. 42

WANTED TO RENT—Pasture for 20 to 30 head. Must have water. Call 475-2771. 40tf

INDUSTRIAL & RESIDENTIAL mechanical servicing plumbing, heating, pumps, furnace, water heaters and electrical repairs. Dial 1-517-522-8860. 43

BABY SITTING — Will care for your child in my licensed home. Phone 475-8055. 40tf

SPRING CLEANING—Need some work done at your home? Yard clean-up, raking, painting, car washed — you name it. Baptist Church Youth are earning money for a spring banquet. Satisfaction guaranteed. Call 475-8323. 43

PRINTING from John's Shop — for weddings, anniversaries or any occasion. Satisfaction guaranteed. Prompt service, reasonable prices. Phone 475-7500. 48

FRISINGER REALTORS

WANT ADS

KING SIZE QUILT, home-made, for sale, cheap. Also, one all tied off, pretty. Call 475-2834. 42

GARAGE SALE—Saturday, April 10, 10 a.m., until 6 p.m. at home of Doug Boyer, 10, Sycamore Dr. Phone 475-2082. Moving and need to sell.

FOR SALE—Combines, Massey-Harris Clipper 6', \$50; International No. 76, \$150. Phone 475-2572 evenings. 42

FOR SALE—Miniature Schnauzer, AKC eligible, female, 11 months. Wonderful pet for children. Phone 475-2937. 43

WANT ADS

WANT ADS

GARAGE SALE—Tuesday, April 13-17, 405 Railroad St., Chelsea. 42

WANTED—Ride to St. Joseph Mercy Hospital, 7 a.m. to 3:30 p.m. Call 479-7075. 42

AKC POODLE pups. 20100 Old US-12, Chelsea. Phone 475-8784. 43

WANTED—Used children's books and magazines. Will pick up. Phone 475-8493 after 5 p.m. 43

ROD & GUN CLUB to shoot—The Chelsea Rod & Gun Club will begin Spring Trap Shooting on Tuesday, April 13, 1971 at 7:00 p.m. 42

WANTED—Spinnet piano. Call after 4:30 p.m. weekdays, all day Saturday. 428-8705. 43

FOR SALE—6-acre building site, close to Chelsea, McKinley Rd. Phone 475-2597. 43

PICK-UP TOOL BOX for sale. Contractor size tool and equipment box in excellent condition. Fits Ford or Chevy. Reasonable. 475-7654 after 6:00 p.m. 42

CLEAN rugs, like new, so easy to do with Blue Lustre. Rent electric shampooer, \$1. Dancer's. 42

LOST—Navy blue and white prescription sun glasses in blue case. Phone 475-2681. Reward. 42

THANK YOU
I wish to thank all relatives, neighbors, and friends for their kindness while I was in the hospital and at home.
Carrie Dunlap.

IN MEMORIAM
In memory of Jim Walter, who was taken from us one year ago. Jim is deeply missed by those who loved him so much, mother, father, daughter, sister, and brother.

THANK YOU
I wish to thank all my friends and relatives for remembering me with the gifts, cards, and calls on my 90th birthday.
Mrs. Lydia Zahn.

THANK YOU
Sure appreciated the many cards, letters, and flowers from friends and relatives during my 20 days in St. Joseph Mercy Hospital, Ann Arbor. Also the words of comfort from the Rev. William Enslin.
Ralph Sundberg.

IN MEMORIAM
In memory of Jim Walter, who was taken from us one year ago. Jim is deeply missed by those who loved him so much, mother, father, daughter, sister, and brother.

CUB SCOUT NEWS

DEN 13, PACK 435—
Den 13, Pack 435 met at the home of Mrs. Myers, den mother. Mrs. Steinaway is assistant den mother. The cubs took home the bird houses which they made for the last meeting. To make the bird house, they cut large plastic bottles in half and nailed them to boards. They cut a small hole in front, and put a stick for a perch below the hole. They then painted them bright colors, blue, gold, and silver.

They are learning a song, "We've Got the Cub Scout Spirit," and practice "God Bless America." A Family Day will be held April 18. The boys are to bring hot dogs and will have a picnic after their kite flying contest. They are making their kites themselves. Their family day will be at Park Lyndon of Washtenaw on April 18 at 2 p.m.

DEN 7, PACK 445—
Den 7, Pack 445 met Friday evening at the home of Mrs. Riemschneider. Meeting opened with the flag ceremony. The cubs had a peanut rolling contest and played a game of kickball. Next meeting is April 24.

Steve Myers, scribe.



ROAD RALLY TROPHIES: A gleaming row of shiny trophies, donated to the Palmer Drag Club, await their new owners, which will be determined at the sixth annual Rallye to be held April 18. The event is sponsored by the Ford Motorsports Association, which gave the trophies to the club. Trophies will be awarded the first- and second-place drivers, and the first- and second-place navigators.

Trophies Arrive for Road Rallye

Rallye Day, USA, 1971, a nationwide celebration sponsored by the Ford Motorsports Association has presented Palmer Drag Club with the Rallye Day Trophies, it was announced this past week.

Contest date is Sunday, April 18. This will be the sixth year that this event has been held, officials at Palmer Ford claim.

This year's event will start from the Stop & Shop parking lot. The first car will leave at 1 p.m.

Four trophies to be given will include awards for the first and second driver, and first and second navigator.

No special equipment or experience is necessary to compete in this event, which is open to the public as well as local club members. All profits will be donated to the United Fund, Drag Club members announced.

Those interested in entering the Rallye may contact Palmer Ford, 222 S. Main St., or meet at the starting point on April 18.

Edison Co. Seeks Zoning Permit For Huge Station in Dexter Area

Dexter Township Zoning Board met Monday evening, March 29 at the township hall to hear arguments from the Detroit Edison Co., requesting a conditional use permit to build a huge power switching station on a farm located at 5555 Madden Rd.

The board was undecided on the issue, and took the matter under advisement. A second hearing is scheduled for April 12, at which time it is hoped that a decision will be reached.

According to John Tandy, township supervisor, the company requests permission to construct a 345 KV bulk power switching station to transmit power along their east-west line. This structure will cost \$5,000,000, and could drastically affect the tax base in the township Tandy said, although as a township's tax base

Dexter Township Pinched...

(Continued from page one)

Clinton Metropolitan Authority, land owned either by Huron-Clinton Metropolitan Authority, or by the state of Michigan. As a result, he claimed, most summer week-ends, and other heavy tourist times, the area is congested with outsiders, who place an extra burden upon the roads, and the law enforcement officials in the area. It was with great regret that the township has to let Parker go, as it was felt that his services were desperately needed, Tandy said, but that the budget, which was approved at \$48,180 exceeded the cash on hand by \$4,000 already, and would not justify this extra expense.

even though the salaries of all township officials remained the same, Tandy pointed to the increased cost of maintenance to the new township hall, and to finishing costs of the building which must yet be paid. New furniture is also desperately needed at the building, Tandy stated.

In addition to paying salaries, though, the townships must now make social security payments to the government to cover all salaries paid to their officials. This resulted in extra expense to the townships, Tandy claimed.

Also, the township faces "one-time" expenses to be made this year, which, hopefully, will not have to be repeated in future years. A total of \$3,000 will be spent to improve township roads this year, as well as an additional \$1,000 to finish areas of the township hall.

To help defray these expenses, the township will have to dip into reserve funds, Tandy claimed, and try harder next year to close the gap between money going out, and money coming in. A tax levy of one mill was again approved.

On the bright side, the township allocated an extra \$100 to each of

Salary Increases Approved in Sharon

Sharon township voters turned out in larger droves also, township supervisor Allen Alber explained. In the past, only two to three have bothered, and this year, a total of 13 showed up to take part in township democracy. The residents approved a budget of \$17,015, which was an increase over last year's budget by a few thousand dollars, he said.

The largest budget encompassed the new social security payments, and pay raises for the township officials. It also carried an estimated increased cost for the use of the land fill, and a factor against inflation.

Pay hikes included a raise of from \$1,600 to \$2,400 for the supervisor, while the clerk's salary was raised from \$400 to \$1,500. The treasurer received an increase of from \$500 to \$1,800.

Board of Review members were granted a pay raise from \$20 to \$30 a day, while members of the Zoning Board and the Zoning Board of Appeals will receive \$7.50 per meeting.

Sharon township carries no property tax millage. This remained unchanged.

Easter Services...

(Continued from page one)

Easter Sunday service will be at 9:15 a.m. at St. Barnabas.

Sunrise Services for Easter Day have been scheduled for 6:30 a.m. at both Zion Lutheran church, and St. John's Evangelical and Reformed United Church of Christ. Both will be followed by traditional Easter breakfasts. Our Saviour Lutheran church will hold a 6:30 a.m. Sunrise Service also, followed by an Easter breakfast. Easter Communion will be at 10:30 a.m. at the church.

Zion Lutheran church will hold "Festival Worship," at their 10:45 a.m. service. Holy Communion will be offered at this service. St. John's Evangelical and Reformed church will hold Easter services at 10 a.m., also offering Holy Communion.

Holy Week activities for St. Mary Catholic church include Holy Thursday Mass, to be held at 7:30 p.m. this evening. Good Friday, the Stations of the Cross will be celebrated at 12:30 p.m., followed by liturgical services at 1 p.m.

Masses on Holy Saturday will be at 7:30 p.m., and Easter Sunday, there will be the regular schedule of masses at 6:30 a.m., 8 a.m., 10 a.m., and 11:30 a.m.

Community Good Friday Service...

(Continued from page one)

offered by the Rev. David Kleis, pastor of St. Johns United Church of Christ of Rogers Corners. The Rev. Kleis' sermon, will be "The Seven Last Words of Christ, A Crimson Symphony."

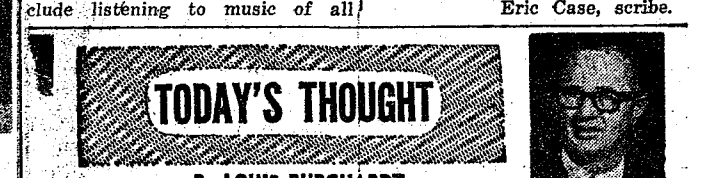
The Rev. Kleis is a native of Holland, Mich., where he took his bachelor's degree from Hope College in 1963. He later obtained a master's degree at the University of Michigan, and a Master of Divinity Degree from the Gordon-Conwell Theological Seminary in Boston.

The Rev. Kleis has also done academic work at Breadloaf School of English in Middlebury, Vt., and at Brandeis University in Massachusetts. He is presently working toward a Doctor of Education degree in American Literature at the University of Michigan while he serves the Rogers Corners church. A resident of Ann Arbor, the Rev. Kleis is married, and he and his wife, Diane have two children, David Russell, and Deborah Washburne. His hobbies include listening to music of all

Den 5, Pack 415—
Den 5, Pack 415 met Tuesday, April 6, at the home of Mrs. Richard Seyfried. The boys opened the meeting with the pledge of allegiance. Cubs discussed the trip they will make to the Washtenaw County Jail. Also, they planned to hold a kite flying event April 25.

Cubs then went outside to play a game of baseball. Meeting closed with a song. Treats were furnished by Kenny Aldrich.

Eric Case, scribe.



TODAY'S THOUGHT

By LOUIS BURGHARDT

Christians accept as everlasting truth, the story of a happening in 33 A.D. . . . that a Man lived, was crucified, died and was buried in a tomb. They accept as truth that the tomb was empty three days later. They accept as truth that He had risen, as He said He would . . .

They accept as truth the unchanged story told by one generation to another from the time of the Apostles. They accept as truth that resurrection is a fact and not a mere theory about death. They accept as truth that there is a literal, moral and spiritual sense about life, death and resurrection that makes sense. They accept as truth that just as He lived in the flesh yesterday, He lives today and will live tomorrow in everlasting fellowship, in glory and peace with God. They accept as truth that their own future can contain that same certainty. They accept as truth that there need be no fear of death . . . It's a wonderful truth, isn't it? . . . BURGHARDT FUNERAL HOME, 214 East Middle St., Chelsea, Mich. Phone GR 5-4141.

—SPECIALS—

12-OZ. BOTTLES
Coca-Cola 6 for 50c
\$1.95 per case of 24 bottles Plus Deposit

ECKRICH
Roasted Sausage . . lb. 77c

12-OZ. CAN BIRD'S EYE FROZEN
Orange Juice 39c

NO. 2 CAN WILDERNESS
Apple Pie Filling, 2 for 55c

ASSORTED FLAVORS
Kool-Aid 6 pkgs. 28c

We Have Onion Sets and Bulk and Package Garden Seeds

KUSTERER'S
FOOD MARKET
DIAL 475-2721 WE DELIVER



ANY TRIP YOU MAKE will be more pleasant, if the car you drive is financed the Bank Way—economically, conveniently and with local people.

CHELSEA STATE BANK

Member Federal Reserve System

FDIC

Member Federal Deposit Insurance Corp.

SPRING DANCE

at KNIGHTS OF COLUMBUS HALL - 9:30 p.m.

SATURDAY, APRIL 17

LIVE MUSIC - SET-UPS - LUNCH

Donation: \$5.00 per couple

DOUBLE-BREADED SPORT COATS

By **CAMPUS**

\$39.95

55% Dacron, 45% wool. Year around weight.

Others to \$55.00

— ★ —

Large Stock of **SLACKS**

Flares or Regulars

\$8.95 to \$17.95

FOSTER'S MEN'S WEAR

Superstan.

Brand 21 ALFALFA

AN EXTRA CUTTING YEAR AFTER YEAR

New Superstan brings you the best of both alfalfa worlds . . . the extra-cutting vigor of Socheville . . . the winter hardiness of Dura-Stan.

Lush and leafy Superstan grows an extra early cutting of alfalfa each year . . . on long rotations of 4 years and more. Superstan alfalfa combines outstanding seedling vigor . . . rapid re-growth . . . wilt resistance . . . winter hardiness . . . and high leaf-to-stem ratio.

Like to hear more? Stop in at . . .

Honeggers & Co., Inc.

Phone 475-3611 Chelsea

teweles seeds

Superstan and Dura-Stan are Tweles brand names; 21 and Socheville are variety designations.

7 DAYS LEFT!

R.E.T.S. TAX SERVICE

CHELSEA, MICHIGAN 105 S. Main (Downstairs) PHONE 761-3025

Income Tax Forms QUICKLY and ACCURATELY Prepared

We provide the following:

- ★ Personalized Service
- ★ Competitive Rates
- ★ Offices in Chelsea, Ann Arbor and Ypsilanti
- ★ We guarantee our work. If you should incur a penalty, or interest due to our error, we will pay it.
- ★ Charge our service on MICHIGAN BANKAMERICARD or MASTER CHARGE.

STARTING APRIL 9 Office Open Daily 10 a.m. to 6 p.m. thru April 15. NO APPOINTMENT NECESSARY.

LOCAL 437 & 1284 MEMBERS—See Your Plant Chairman for details of the package plan we offer.

7 DAYS LEFT!

Community Calendar



Older Adult Group of the Methodist church, Saturday, April 17, in church social center. Pot-luck dinner, 12:30 p.m. Bring own table service and a dish to pass.

Regular business meeting of VFW Auxiliary, Monday, April 12, at 8 p.m. in the Rebekah Hall. Election of officers.

Spaulding for Children Auxiliary, Monday, April 12, 8 p.m. at the farm.

Ether Chapter of the Congregational church, April 15, 8 p.m., at the church. Bring scissors, white thread, and needles for sewing.

Spring Dance, April 17, 9:30 p.m., Knights of Columbus Hall. Live music, set-ups, and lunch. Donation, \$5 per couple. adv48

American Legion and Auxiliary hospital equipment available by contacting Loren Keezer at 475-2766 or 475-3431.

Sewing every Tuesday afternoon at Korner House.

Chelsea Community Farm Bureau monthly meeting, April 15, at Sylvan Town Hall. Pot-luck supper at 7 p.m. Hosts: Mr. and Mrs. Erwin Trinkle, and Mr. and Mrs. John Klink.

Douglas Schneider Accepts Pastorate in Marine City

Douglas Schneider, son of Mrs. Bernice Schneider, 219 Railroad St., and the late Lewis Schneider, has accepted a call to become pastor of St. John's United Church of Christ, Marine City. Schneider assumed duties on March 21. The family will move to Marine City after Easter, having lived with his mother since last August.

Schneider and his wife, Karen, spent more than eight years in India as agricultural missionaries under the United Church Board for World Ministries. They are members of St. Paul United Church of Christ, in Chelsea.

Two of the couple's children, Benjamin, 8, and Kenneth, 6, were born in India, while Kathleen, 4, was born in Fremont.

The Schneiders returned from India in August, 1970. From August through December last year, Schneider was involved in deputations for the United Church Board for World Ministries. He visited more than 40 churches in eight states, describing the community development work which he was working with in India. Since January he has been working on a book, which, when published, will describe his family's work in India.

The church at Marine City will be the first full-time pastorate for Schneider who has training in both agriculture and theology.

OES one day, spring rummage April 16, 9 to 9:30, at the Masonic Hall on W. Middle St. Hall will be open April 15 from 9 to 9:30, for sorting. For pick-up, call 475-6591, or 475-6531. adv43

No April meeting of the Chelsea Band Boosters. Next regular meeting of the Boosters will be May 13, at Beach Junior High school at the usual time.

Jerusalem Farm Bureau, at the home of Mr. and Mrs. Kuhl, April 8, 8:30 p.m. Bring sweet rolls for refreshments.

Inquiries regarding the Chelsea blood bank may be directed to Harold Jones in the event that Mrs. Dudley Holmes is unavailable.

Association for Children with Social and Learning Difficulties, Monday, April 19, 8 p.m., Reading Improvement Center, 1610 Washtenaw, Ann Arbor. Topic: "The parent interview—A Program."

Chelsea Rebekah Lodge, No. 130, rummage sale, April 23 and 24 at Sylvan Town Hall. Call 475-3893 or 475-7434 for pick-up of rummage. adv44

TOPS Club at library, Wednesday afternoon group, 12:30 p.m. For information call 426-4549. Thursday evening group, 7 p.m. For information call 475-8720.

Fun Night every Friday night at 7:30 p.m. at Korner House, Main St.

BIRTHS

A daughter, Lisa Diane, to Mr. and Mrs. James R. Wheeler, of Kalamazoo, Tuesday, March 30. Mrs. Wheeler is the former Christine Fisher, daughter of Mrs. Eugene Fisher, and the late Mr. Fisher. Paternal grandparents are Mr. and Mrs. James Wheeler of Mt. Clemens.

A daughter, Jennifer Lynn, April 5, to Mr. and Mrs. Robert Geske of Clinton. Maternal grandmother is Mrs. Phyllis Seeger, Petersburg, and paternal grandparents are Mr. and Mrs. Alton Geske, 649 N. Main.

Michigan Now Has 116 Aviation Schools

Lansing—There are 116 licensed aviation schools in Michigan, an increase of four during the last year, the Aeronautics Commission of the Michigan Department of Commerce reported recently.

Sixty-six of the schools are approved for veterans training, the Aeronautics Commission said, and all but 15 offer both flight training and ground school courses.

Thirteen of the schools are qualified to offer airline transport training.

Track Team Downs Strong Jackson Squad

Chelsea High school's track team defeated teams from Jackson Lumen Christi and Michigan Center in a triangular meet held Tuesday, April 6, at Michigan Center. Final score for the day was Chelsea, 68; Lumen Christi, 60½; and Michigan Center, 19½.

Coach Bert Kruse stated following the meet that Chelsea's win was a good season opener, as Lumen Christi is one of the stronger teams in the Jackson area. He added that Chelsea's squad was running minus several athletes, due to trips and injuries, and that some of the times and distances put in by the boys who did participate were quite outstanding for an early season meet. He attributed Chelsea's win to the strength the team showed in the field events, and its over-all balance in the other events.

Winners and those who placed for Chelsea included Randy Seitz, who took first place in the shot put event, with a throw of 46'3". Mark Collins took first place in the long jump, with a jump of 20'8", while Jeff Hughes placed third in that event with a jump of 19'11".

Roger Fitch placed first in the high jump, jumping 5'8", while Mark Collins took second with 5'6".

Tim Lancaster was second in the pole vault with a 10'6" jump, and Dan Hoover placed fourth, jumping 9'.

The 880-relay team took first place with a time of 1:34. Runners on that team included Mark Collins, Larry Gorton, Kim Aronson, and Jeff Hughes.

George Cameron placed second in the 880-yard run, in a time of 2:09.3, followed by Jeff Marshall in third place, in 2:13.1.

Larry Gorton took first in the 120-yard high hurdles, which he ran in 17.0 seconds.

Dave Buxton ran the mile in a time of 4:46.7 to take first place. Jeff Hughes tied for second place in the 100-yard dash, with a time of 11.0. Bob Salyer was fourth with 11.3 seconds.

Kim Aronson was first in the 440-yard dash, running that event in 52.3 seconds, while Dan Hoover was fourth in 56.0 seconds.

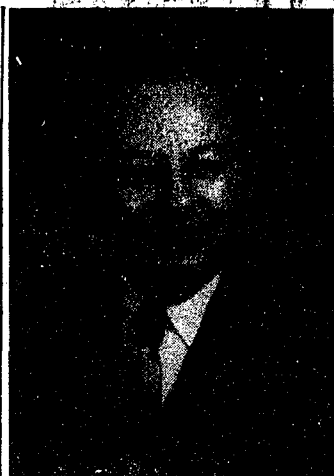
Jeff Hughes was second in the 220-yard dash, which he ran in 23.8 seconds, and Bob Salyer was fourth, with a time of 25.2 seconds.

George Cameron, Jeff Marshall, Tom McKernan, and Dan Hoover placed second in the mile relay event.

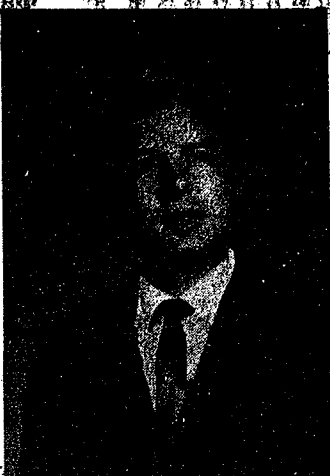
Coach Kruse claimed that the distances in the shot put, and the long jump, and the times in the 880 relay, mile, and 440, were all "fine" times.

Next meet is against Dundee. It will be at home, at 4 p.m., this afternoon, Thursday, April 8.

Only four persons have completed 25 years of service with the Huron-Clinton Metropolitan Authority since the first staff was hired in 1942. They are: P. K. McWethy, Secretary, Edward Savich, cartographer; Howard Musolf, warehouse; and Conrad P. Kuhles, engineering aide, who retired in 1969.



GEORGE P. FRISINGER



PAUL FRISINGER

Frisingers Start Father-Son Real Estate Sales Agency

George P. and Paul Frisinger have formed the Frisinger Realty Co., located in the Pierce building at the corner of S. Main and Old US-12, it was announced this past week. Both are realtors associated with the Ann Arbor Board of Realtors, and are graduates of the University of Michigan Real Estate program.

George Frisinger has been associated with Lewis & Frisinger-Highway contractors, with whom he worked for more than 20 years. In 1962 he entered the field of real estate, as an associate of Butts & Swisher Co., in Ann Arbor. In 1967 he became a realtor with the Ann Arbor Board of Realtors.

Frisinger moved to Chelsea with his family from Ann Arbor in 1956, to the Homestead Acres Farm on Jerusalem Rd. He now lives in a home he and his wife built at North Lake. He has four children, the oldest of whom is Paul, his new partner. His daughter, Mrs. Brian (Sherry) Lawton, is married, and lives in Chelsea. She is the mother of one son, Kirk. She and Paul are both graduates of MSU. David Frisinger is a 1970 graduate of the University of Michigan, and a third son, Roger, is presently a student at Western Michigan University in Kalamazoo.

Mrs. Frisinger has many hobbies, and for a time she operated the Homestead Acres Children's Camp. She presently operates the Chelsea Art Center, located at 935 S. Main St., adjacent to her husband's realty office.

Paul Frisinger was admitted to the Ann Arbor Board of Realtors towards the end of December. A graduate of Chelsea High school, he earned his bachelor's of science degree at Michigan State University. He earned his certificate of real estate from the University of Michigan. Paul is married and lives with his wife, Kathy, and one son, Scott, on Freer Rd.

Herman Koenn, and Mrs. Hope Bushnell are also associated with the Frisinger firm as full-time sales representatives.

Cub Scouts...

DEN 1, PACK 415—

Den 1, Pack 415 met April 6 at the home of their den mother. Winners of the scavenger hunt were: Bryan Herrick, first place; John Dreiman, second place; and Kenneth Cobb, third place. The boys passed out inspection sheets for the April Pack meeting.

Cubs then colored Easter eggs, and made Easter baskets. Kenneth Cobb brought treats.

Bryan Herrick, scribe.

State Plans Rapid Expansion of Waterloo, Pinckney Area Parks

Among the many reports submitted to the Mill Creek Research Council at their annual meeting, held Tuesday evening, March 30, was a detailed series of slides, and facts, which show plans for future land acquisition and development by the Department of Natural Resources in the next five years. This study centered on the two major recreation areas in this region, the Pinckney and Waterloo Recreation Areas.

Studies showed that plans for the Pinckney Recreation Area, for the next five years, include the addition of 1,680 acres, coming to a total of \$1,100,000 (tax dollars). Waterloo Recreation Area will be expanded by another 4,840 acres, at an estimated cost of \$1,540,000.

Russell Baldwins Injured in Auto Crash Near Clare

Mr. and Mrs. Russell Baldwin, 305 Taylor Lane, were injured March 19, in an accident which occurred near Clare, as they were on their way home from a visit to Traverse City.

The couple were hit head-on as they traveled south on Rt. 10, by another car heading north. It was snowing at the time of the accident.

Baldwin suffered knee and finger injuries, and Mrs. Baldwin had facial cuts, and a concussion.

They were both taken to Clare Osteopathic Hospital, where they were transported home to Chelsea on March 20, by the couple's son, and daughter-in-law, Mr. and Mrs. Donald Baldwin.

Mrs. Baldwin is reported in good condition, and is remaining at home, although Mr. Baldwin was hospitalized in the Chelsea Medical Center with complications on March 31. He remains in room 134.

Mr. and Mrs. Harold Downey, and children, their daughter, arrived April 3, from Oklahoma City, Okla., to visit.

Carrots are rich in vitamin A.

The Park is planning to spend a total of \$10,000 to improve their hiking trails during that time.

Within Waterloo Area, in Jackson county, the DNR is planning an impoundment of the Portage Lake area, coming to a cost of \$450,000, while camping and day-use beaches will be planned for Portage Lake, at an estimated cost of \$295,000. Within Washtenaw county, a day-use beach is planned for Mill Lake, to cost the taxpayers \$50,000. In the Pinckney Area, Livingston and Washtenaw counties together will benefit from a camping and beach facility to total \$175,000 in expenditures.

A series of three other day use parks, with beaches, are scheduled to be built within Washtenaw county on state owned land, in the Pinckney Area. These will cost \$50,000, \$150,000, and \$175,000 to develop, all within the next five years.

MORC officials estimated that by 1976 there will be public access to 40 lakes of all sizes, more than half of them state owned in their entirety, and the total number of state-owned acres in this area will total 31,000.

Total estimated expenditures to accomplish all this will cost \$1,650,000 in the Pinckney Area, and \$2,315,000 in Waterloo, for a grand total of \$3,965,000.

Hot Wheel Sizzlers!

CHECK THESE PRICES & SAVE!

	Reg.	NOW
SIZZLER CARS	\$ 3.47	\$ 2.69
REG. HOT WHEEL CARS . .	.98	.77
SIZZLER CALIFORNIA SET	\$19.88	\$14.99
SIZZLER PACIFIC SET . .	\$25.88	\$19.99

Complete Selection
All Hot Wheel Accessories
AT SAVINGS UP TO 40%

GAMBLES

110 N. MAIN ST. PHONE 475-7472

New! Corelle® Livingware by Corning

The incredible everyday dishes guaranteed for two full years



ONLY \$19.95 20-PIECE SERVICE FOR FOUR

SERVICE FOR FOUR includes 4 each: large plate, medium plate, bowl, cup and saucer

Like nothing you've ever used before. It's not plastic...not earthenware...and not china. Yet it has the look, feel, and "ring" of china.

Made of a new material invented by Corning scientists, Corelle® Livingware can take all the punishment of everyday use and abuse. Safe in the oven and dishwasher. In fact, Corning promises to replace any piece that should break, chip, craze or stain during two years of everyday use — free and without question.

Corelle® LIVINGWARE by CORNING

Four beautiful patterns available any time by the piece or by the set.

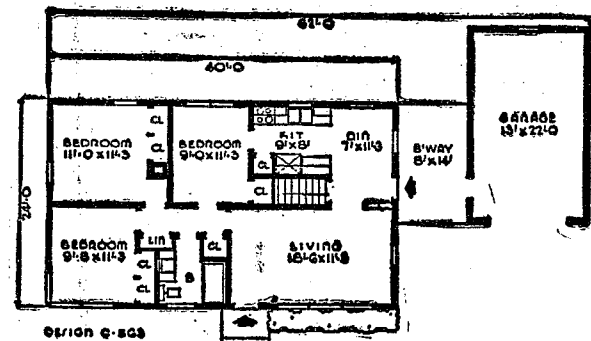
GAMBLES

110 N. MAIN ST. PHONE 475-7472

BELIEVE ME... THIS IS NO SALE!



A SMALL HOUSE PLANNING BUREAU DESIGN NO. C-348



THAT'S RIGHT...

Chelsea Lumber Company will supply all the building materials for this house for only . . .

\$6,900.00

THIS INCLUDES...

- ★ MASONRY MATERIALS
- ★ LUMBER
- ★ WINDOWS
- ★ GARAGE MATERIALS
- ★ DOORS
- ★ KITCHEN CABINETS
- ★ DISHWASHER, OVEN & RANGE
- ★ INTERIOR FINISH MATERIALS

Otherwise . . . all the materials you need!

OR BETTER YET...

Bring in your own house plan or pick out one of our other plans, and let us give you a figure on a house of your choosing.

CHELSEA LUMBER CO.

Dial GR 5-3391

SHOP AT HEYDLAUFF'S

Where SERVICE Is Our Policy
APPLIANCE PARTS & SERVICE
TELEVISION PARTS & SERVICE
COMPLETE ANTENNA SUPPLIES

- ★ PHONOGRAPH RECORDS
- ★ 8 TRACK & CASSETTE TAPES
Pre-Recorded and Blanks
- ★ PHONOGRAPH NEEDLES
& ACCESSORIES
- ★ DISPOSABLE VACUUM BAGS
& ACCESSORIES for:
Hoover - Eureka
General Electric - Electrolux

HEYDLAUFF'S

(Formerly Frigid Products)

113 N. Main St., Chelsea Phone GR 9-6651

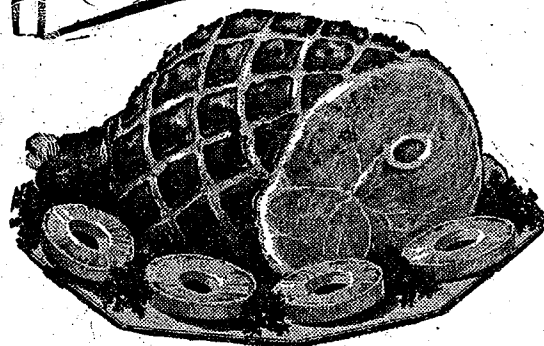
The Supermarket That's Just a Little Bit Better

Stop & Shop

14901 Old U.S.-12
Corner at M-52
Chelsea



Prices effective Wednesday, April 7, 1971
through Tuesday, April 13, 1971.



"Triple R Farms" Semi-Boneless

HAMS

Whole or Half **69¢ lb.**

De-Fatted • Hickory Smoked • Fully Cooked

Holman's Cure #1

Registered Hams **\$1³⁹ lb.**

"Triple R Farms" Mich. Grade 1

Polish Sausage **69¢ lb.**

"Triple R Farms" Mich. Grade 1

Skinless Wieners **59¢ lb.**

Lean, Tender, Boneless & Cubed Breaded

Pork Cutlets **79¢ lb.**

Lean, Tender

Pork Steaks **59¢ lb.**

"Triple R Farms" U.S.D.A. Choice

Boneless Rolled Rump or Sirloin Tip Roast **\$1²⁹ lb.**

BONUS SPECIAL

Stop & Shop's Enriched Sliced

WHITE BREAD
1 1/4-Lb. Loaf **5 for 95¢**

BONUS SPECIAL

McDonald's Low-Fat or

HOMOGENIZED MILK
Gallon Carton **89¢**

BONUS SPECIAL

Carnival

ICE CREAM
Assorted Flavors **48¢**

BONUS SPECIAL

Shamrock Country Fresh

MEDIUM EGGS
Grade A All White Doz. in Ctn. **39¢**

BONUS SPECIAL

Kraft's Salad Dressing

MIRACLE WHIP
Qt. Jar **48¢**

BONUS SPECIAL

Kraft's Philadelphia

Cream Cheese
8-Oz. Pkg. **29¢**

BONUS SPECIAL

McDonald's

HALF & HALF
Qt. Ctn. **39¢**

BONUS SPECIAL

Doumak Miniature

Marshmallows
10 1/2-Oz. Pkg. **19¢**

BONUS SPECIAL

Imported Mandarin

ORANGES
11-Oz. Can **23¢**

BONUS SPECIAL

JETSICLE
24 Ct. Pkg. **89¢**

Stop & Shop's Homemade

Pork Sausage **59¢ lb.**

Stop & Shop's All American Beef

Hamburger **59¢ lb.**

"Triple R Farms" Fresh Dressed

Chicken Legs **59¢ lb.**

"Triple R Farms" Fresh Dressed

Chicken Breasts **69¢ lb.**

Morrell's Pride

Sliced Bacon **69¢ lb.**

WE RESERVE THE RIGHT TO LIMIT QUANTITIES

For Your Convenience
OPEN SUNDAY
10 a.m. - 4 p.m.
All Sale Prices Effective Sundays

Sorry, No Sales To Dealers

Closed
Good Friday
12 to 3 p.m.
Closed
Easter Sunday

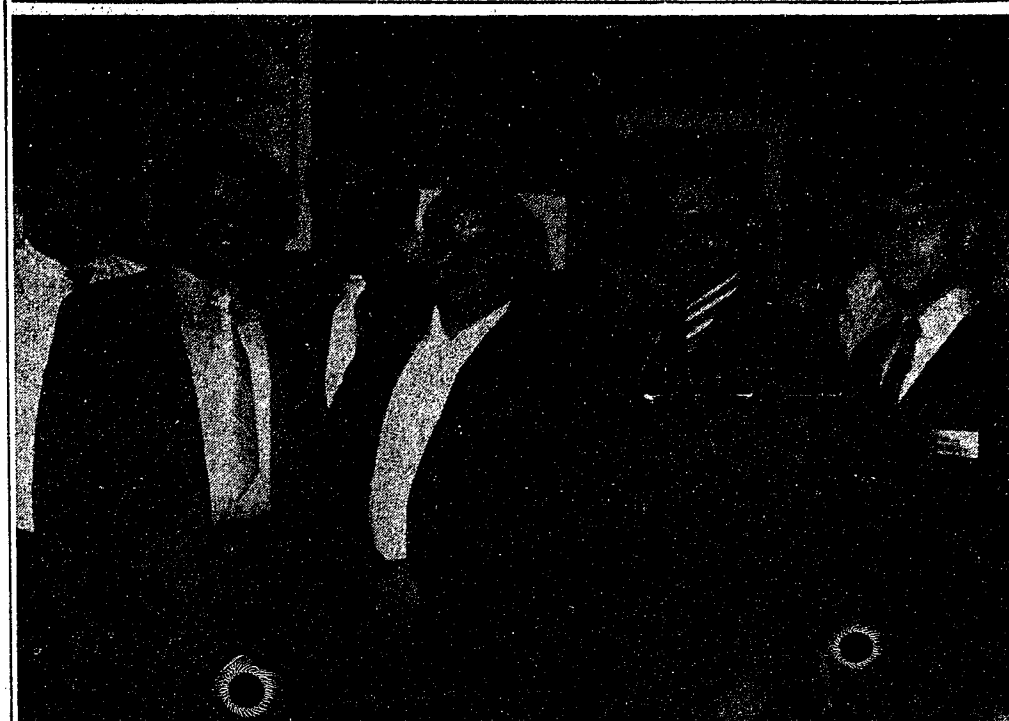
STORE HOURS:
Monday, Tuesday,
Wednesday
9 a.m. - 6 p.m.
Thursday, Friday
9 a.m. - 9 p.m.
SATURDAY
9 a.m. to 6 p.m.
SUNDAY
10 a.m. to 4 p.m.

Second
Section

The Chelsea Standard

Pages
7-12

CHELSEA, MICHIGAN, THURSDAY, APRIL 8, 1971



JAYCEE BOSSES for the coming year, selected at Tuesday evening's meeting include, front row, from left, Ed Greenleaf, treasurer; Dan Eder, external vice-president; Dave Rowe, president; Tom Steele, director. In the second row are, same order, Ron Branham, director; Dick Loring, director; Mitch Zink, internal vice-president; and

Dave Martin, director. Mike Eubanks, new club secretary, was not present at the meeting. At the meeting members took action to change their by-laws and discussed the Easter egg hunt they are sponsoring Saturday at the Chelsea High school athletic field.

Junior High Notes

Wrestling finals were held at Beach school Tuesday, April 6, to determine the winners. The wrestling tournament is sponsored by the Boy's Phys Ed. Club at Beach school. Advisors of this club are Pat Clark, Richard Bareis, and Randy Johnson. There were 24 finalists competing in this tournament.

Sixth graders went to the play "Indian Captive," by Lois Lenski at EMU on Thursday, April 1. They left following homeroom, and returned shortly before lunch.

A student council sponsored dance was held Friday afternoon, April 2 after school. A professional disc jockey from WNRB radio emceed the event.

A model contest was held by the Model Car Club this past week. First-place winner was Doug Eisele, while second-place honors went to Dennis Barker. Winners were announced Friday, April 2.

Steve Bennett,
Beach School Reporter.

40 Members of CHS Trip Club Leaving Saturday for Bahamas

Forty members of the Senior Trip Club of Chelsea High school, along with chaperones, Mr. and Mrs. Larry Oswald, will leave Saturday morning, April 10, at 7 a.m. for a seven-day trip to the Bahama Islands.

The club, which has been in existence for two years, has sponsored various projects to help earn necessary money for the trip. Saturday morning, April 10, the students will fly to Miami on a Delta 747, where they will stay until Monday afternoon, April 12, before boarding the Flavia, a giant luxury liner. The Flavia will sail to Nassau, visiting various islands, and stopping to sight-see, skin-dive, and do everything one does on a Caribbean cruise.

Meals, sleeping accommodations, and entertainment will be provided aboard the giant luxury liner, which has many pools, lounges, and decks. At 1 o'clock Thursday morning, April 15, the group will sail for Freeport, arriving back in Miami at noon on Friday. The seniors will spend a day of leisure in Miami before boarding their plane for Detroit at 10 p.m.

CHS Golf Schedule

April 15—Saline-Dexter	H
April 20—Dexter	H
April 21—Stockbridge	H
April 22—Dundee-Saline	H
April 23—Lincoln & Novi	A
April 28—Hanover	A
May 4—Lincoln-Dundee	H
May 6—Novi	A
May 10—Milan-S. Lyon	A
May 14—Regional meet.	
May 17—League meet.	

Disposable personal income is expected to increase about six percent in 1971, with the Gross National Product expected to top one trillion dollars for the first time.

Easter Flowers



KIWANIS CLUB FLOWER SALE

All profits go for community service projects.

FRIDAY and SATURDAY APRIL 9 and 10

Friday, 8 a.m. to Noon, 3 p.m. to 9 p.m. - Saturday, 8 a.m. to 6 p.m.

- at -

Heydlauff's Store, 113 N. Main St.

'Remember Her With Flowers'

Farm Fresh Produce

New Green CABBAGE	Lb.	10¢
Fresh Crisp PASCAL CELERY	Large Stalk	29¢
U.S. No. 1 CANDY YAMS	Lb.	12¢
Fresh, Tender GREEN ONIONS	Bunch	10¢

NOTICE OF MORTGAGE SALE

County Records, Michigan, and assigning said Mortgage, to JAMES T. BARNES COMPANY, A MICHIGAN CORPORATION, by an assignment dated January 1, 1939, and assigned on January 17, 1939, to the State of Michigan, County of Wayne, Michigan, on which mortgage there is claimed to be due at the date here-

Hamilton & McDonald
Attorneys for Plaintiff
by Vanzetti M. Hamilton, Attorney.
Pearl Street
Plaintiff, Mich. 48197. Mar 18-25-Apr 1-8

Richard Harvey, Clerk

Chelsea Standard

Richard Harvey, Clerk

Chelsea Standard

Richard Harvey, Clerk



BOWLING NEWS



Old Timers League

Standings as of April 1

	W	L
Sportsman's Bar	79 1/2	44 1/2
Sanford Security	77	47
Service	73 1/2	50 1/2
Nelson Realtors	68 1/2	54 1/2
Colonial Lanes	68 1/2	54 1/2
Cloverleaf Lanes	65 1/2	57 1/2
Bob & Otto Standard	65 1/2	57 1/2
Has Beens	65 1/2	57 1/2
Team No. 16	65 1/2	57 1/2
Holzel Service	63	61
Dexter Bowl 'n' Bar	57	67
Mather Co.	54 1/2	69 1/2
Stein & Goetz	54 1/2	69 1/2
Merkel Furniture	53	70
Team No. 14	52 1/2	69 1/2
Lucky 13	46	78
Hartman Ins.	46	78

High team game: Holzel Service, 697.

High team series: Bob & Otto Standard, 2,573.

High ind. game: J. Zucco, 224.

High ind. series: E. Armbruster, 566.

200 games, 500 series and over: A. Robinson, 218; W. Stoll, 212; A. Kaiser, 210; N. Wenk, 207; G. Rohde, 206; W. Fishlock, 200; J. Zucco, 199; W. Fishlock, 199; A. Robinson, 198; A. Kaiser, 194; G. Rohde, 194; J. Otto, 194; B. El-Hott, 193; W. Butzin, 192; N. Wenk, 192; J. Hinds, 192; G. Lawrence, 192; G. Heppner, 192; W. Fishlock, 192; W. Tyaskowski, 192; G. Whitehead, 192; W. Stoll, 192; E. Niethammer, 192.

Chelsea Nite Owl League

Standings as of April 5

	W	L
Foster's Men's Wear	81	39
Steel's Heating	77 1/2	42 1/2
Heller Electric	67	49
Cavanaugh Lake Store	65	55
Mid-State Finance	63	58
Smith's AIA	59	61
Pump & Pantry	55 1/2	64 1/2
Jack & Son Barbers	52	68
Waterloo	51	65
Wahl's Argo Sparks	51	69
McCall's Mobile Feeds	48	72
The Profs	47	73

600 series: M. Packard, 602.

500 series: E. Buku, 579; K. Kartka, 564; G. Packard, 558; J. Waldyke, 548; G. Rentschler, 540; A. Peterson, 542; W. Wood, 538; G. Heim, 529; R. Foster, 528; A. Gieske, 517; J. Gaken, 512; J. Eder, 505; P. Tempstra, 500; D. Warren, 503.

200 games: M. Packard, 233; J. Waldyke, 228; K. Kartka, 220; E. Buku, 220; G. Packard, 207, 205; W. Wood, 203; G. Heim, 203; D. Roehm, 202; R. Smith, 200.

Charlie Brown's Peanut League

Standings as of April 3

	W	L
Crazy Chryslers	55 1/2	28 1/2
Eagles	54 1/2	29 1/2
Wipe Outs	46	38
Snoopy Stars	40	44
Road Runners	39	45
Banana Splits	17	67

Games over 70: G. Packard, 74, 100; R. Klink, 70; D. Alber, 100, 80; K. Steinaway, 106; S. Wilson, 72; E. Case, 70; C. Kalishek, 83; M. Foster, 104, 79; R. Ostrander, 102, 73; C. Umstead, 75; D. Bowen, 74; J. Boyer, 87, 104; K. Ford, 76; B. Hasler, 107; M. Waldyke, 112; D. Boyer, 88, 116; D. Seyfried, 92, 77; J. Waldyke, 80, 88; L. Lovely, 71; J. Verwey, 78, 75; C. Hasler, 74; D. Wilson, 70, 101.

Series over 140: R. Ostrander, 175; J. Boyer, 191; B. Hasler, 176; M. Waldyke, 170; D. Boyer, 204; D. Seyfried, 169; D. Waldyke, 168; J. Verwey, 153; D. Wilson, 171; G. Packard, 174; D. Alber, 180; K. Steinaway, 175; M. Foster, 183.

A Liberal is always that way with the taxpayers' money.

Chelsea Women's Bowling Club

Standings as of March 31

	W	L
Chelsea Milling	90 1/2	20 1/2
Jiffy Mixes	76	44
Foster's Men's Wear	69	51
Chelsea Lanes	65	55
Wolverine Bar	62	58
Parish's Cleaners	60 1/2	59 1/2
The Pub	59	62
The Ugly Ducklings	58	62
Chelsea Grinding	51	69
N. American Rockwell	49	71
Norris Electric	44	76
Schneider's Grocery	37	83

450 series or over: P. Guest, 523; R. Hummel, 519; B. Fritz, 519; S. Mahaney, 491; D. Eder, 485; P. Fitzsimmons, 476; A. Sindlinger, 468; L. Orlovski, 464; C. Bradbury, 461; P. Poertner, 465; D. Pouty, 460; N. Kern, 455; P. Wurster, 452; G. Kuhl, 450.

150 games or over: P. Guest, 188, 179, 156; R. Hummel, 189, 170, 160; B. Fritz, 158, 202, 159; S. Mahaney, 168, 187; D. Eder, 183, 159; P. Fitzsimmons, 156, 166, 154; A. Sindlinger, 176, 167; L. Orlovski, 178; C. Bradbury, 186; P. Poertner, 160, 166; D. Pouty, 177; N. Kern, 150, 165; P. Wurster, 162, 159; G. Kuhl, 156, 177; C. Stoffer, 158; B. Parish, 172; C. Hadley, 158; C. Newman, 152; S. Klink, 157, 172; D. Frisbie, 154; N. Popovich, 168; M. E. Sutter, 162; A. Alexander, 162; A. Turner, 155, 150; H. Morgan, 155; D. Alber, 152; A. Eisele, 151; B. Weakes, 159; S. Greenleaf, 178; B. Fike, 158; A. Fahrner, 161; J. Rowe, 165; A. Boham, 163; D. Eisenman, 160; M. A. Eder, 167.

Charlie Brown & Snoopy's Friends

Prep Division

Standings as of April 3

	W	L
The Bully Brothers	68	19
The Pin Fighters	64 1/2	20 1/2
The Pink Panthers	52 1/2	31 1/2
Good Guys	51	36
Tremendous Strikers	46	41
Strikers	44 1/2	42 1/2
The Partridge Family	43	44
Computers	39 1/2	47 1/2
Creamators	31	56
Red Barons	28 1/2	55 1/2
The Brains	28	59
Groovy Fruitie Tooties	24 1/2	62 1/2

Games of 100 or over: M. Schnaltd, 102; D. Thompson, 130; A. Houle, 105; B. Lewis, 109; M. Bowen, 103; G. Guenther, 114; C. Sannes, 100, 105; J. Milliken, 113; K. Mshar, 129; D. Eisele, 110; B. Lovely, 114, 110; J. Sweet, 102, 110; S. Lyster, 133, 131; D. Morrison, 123, 113; J. Elliott, 111, 152; D. Alber, 163, 132; M. Boyer, 129, 100; M. Seyfried, 113; D. Alexander, 120, 114; P. Greenleaf, 102, 105; D. Craft, 101; K. Romine, 112; M. Foster, 110, 150; S. Bowen, 125; J. Boyer, 107, 149; J. Collins, 118, 129; J. Branham, 128; S. Schulze, 108; M. Fahrner, 108, 105; K. Milliken, 106, 126; T. Edick, 100; T. Robards, 110; J. Alexander, 167, 110; R. Rosentreter, 106, 131; D. Craft, 132, 157; C. Miller, 126; A. Series of 200 or over: D. Thompson, 212; B. Lewis, 201; G. Guenther, 206; C. Sannes, 205; J. Milliken, 203; K. Mshar, 224; D. Eisele, 208; B. Lovely, 224; J. Sweet, 212; S. Lyster, 264; J. Morrison, 236; J. Elliott, 263; D. Alber, 295; M. Boyer, 229; D. Alexander, 234; P. Greenleaf, 207; D. Craft, 200; K. Romine, 207; M. Foster, 260; S. Bowen, 224; J. Boyer, 256; J. Collins, 247; J. Branham, 212; M. Fahrner, 213; K. Milliken, 235; K. Toon, 213; J. Alexander, 277; B. Rosentreter, 237; D. Craft, 239; A. Kalishek, 248.

Few people we know of have ever complained about being over-rewarded by life's fortunes.

Rolling Pin League

Dinals Standings

	W	L
Egg Beaters	78	47
Spooners	72 1/2	47 1/2
Kookie Kutters	68	52
Coffee Cups	65 1/2	54 1/2
Grinders	65	55
Kitchen Kapers	62 1/2	57 1/2
Moppy Uppers	62	58
Brooms	65 1/2	54 1/2
Mixers	65	55
Dish Rags	62	68
Pots	60	70
Jolly Mops	59	81

400 and over series: P. Borders, 406; S. Parker, 447; K. DelPrete, 414; C. Shepherd, 443; J. Pax, 408; J. Shepherd, 466; B. Williams, 438; J. Edick, 422; L. Keezer, 435; J. Myers, 409; N. Hill, 404; W. Landwehr, 403; G. Hrie, 425; E. Reynolds, 420; P. Harrook, 425; D. Keizer, 453; W. McMill, 423; T. Steinaway, 442; D. Kinsey, 456; P. Paterson, 404; G. Klink, 456; E. Miller, 401; J. Freeman, 468.

600 series: J. Rabbitt, 609.

140 and over games: P. Borders, 197; S. Parker, 187, 156; K. DelPrete, 147, 147; C. Shepherd, 196; J. Pax, 144; R. Foster, 158; J. Shepherd, 166, 144, 155; E. Williams, 189, 147; J. Edick, 187; L. Keezer, 172; J. Myers, 169, 155; N. Hill, 170; J. Priest, 144, 140; J. Freeman, 188, 154; W. Meranuck, 144; J. Johnson, 145; D. Butler, 158; W. Landwehr, 146; G. Brier, 153; E. Reynolds, 147, 159; J. Rabbitt, 224, 246; P. Harrook, 144, 140; D. Keizer, 170, 150; T. Scott, 155; V. McNutt, 157, 154; A. Roy, 154; D. Anderson, 181; T. Steinaway, 162, 153; K. Bratscheider, 141; D. Kinsey, 179, 166, 160; P. Patterson, 156; A. McGinn, 149; G. Klink, 186, 146; E. Miller, 148.

Splits converted: D. Keizer, 4, 7 and 5, 10; E. Beck, 5, 6; B. Slater, 4, 7, 9; J. Edick, 5, 10; K. DelPrete, 2, 7, 8; S. Parker, 3, 10; R. Foster, 6, 7, 10; D. Dirlam, 5, 7.

Chelsea Lanes Mixed

Standings as of April 2

	W	L
Chelsea Lanes	117	79
Fitzsimmons Excavator	111	85
H. & H.	110	86
Gephart & Barkley	104	92
Turner & Johnson	104	92
Sindlinger & Pierce	101	95
Ann Arbor Centerless	101	95
Wolverine No. 2	98	98
Rabbis & Priests	98	98
Devine & Coppertoll	90	106
Helm & Arrington	78	120
Bollinger's Sanitation	68	130

Women's 150 and over: R. Johnson, 187, 189; F. Gephart, 191, 176; A. Sindlinger, 188, 156; J. Rabbitt, 181; J. Priest, 170; L. Gilmore, 167, 163; D. Keizer, 167, 153; J. Hutzal, 167; A. Coppertoll, 150, 165; E. Harmon, 162, 163; L. Alexander, 157; A. Turner, 151.

Women's 450 and over: R. Johnson, 520; J. Rabbitt, 492; A. Sindlinger, 471; L. Gilmore, 470; D. Keizer, 468; J. Hutzal, 459; E. Harmon, 455; J. Rabbitt, 450.

Men's 175 and over: D. Alexander, 183, 233; L. Gephart, 218; O. Johnson, 179, 212; A. Sannes, 205; R. Gilmore, 202; J. Harmon, 192, 197; L. Keizer, 192; F. Barkley, 188; G. Heim, 186; D. Ellenwood, 183; R. Kiel, 181; D. Coppertoll, 180.

Men's 475 and over: D. Alexander, 587; O. Johnson, 577; J. Harmon, 543; A. Sannes, 536; L. Gephart, 511; L. Keizer, 506; G. Heim, 504; D. Longworth, 487; J. Turner, 481; D. Ellenwood, 481; R. Kiel, 481; M. Rabbitt, 476.

Senior House League

Standings as of April 5

	W	L
Sam's Barbers	75	41
Chelsea Cleaners	75	41
Seltz's Tavern	66	54
The Pub Bar	61	59
Sylvan Center	61	59
Schneider's Grocery	61	59
Dana No. 2	58	62
Spaulding Chevrolet	55	65
Chelsea Grinding	55	67
Wolverine Tavern	50	70
Dana No. 1	50	70
Murphy's Barber Shop	45	75

600 series: S. Hopkins, 645; R. Bauer, 612.

500 series: G. Lawrence, 587; T. McClear, 584; H. Burnett, 581; D. Hatley, 579; O. Johnson, 577; J. Myers, 595; R. Fike, 564; W. Griffith, 561; O. Grounds, 567; D. White, 556; R. Knickerbocker, 554; C. Baize, 553; P. Dickinson, 547; L. Hess, 546; W. Cruse, 541; A. Clemes, 539; M. Poertner, 531; R. Kern, 524; R. Kiel, 522; C. LaRoe, 519; L. Keizer, 516; J. Toma, 516; J. Collins, 512; G. Padgham, 509; W. Fair, 508; C. Par-

Junior House League

Standings as of April 1

	W	L
Chelsea Drug	133	63
J & S Tool	126	70
The Pub	122	74
Smith's AIA Service	106	90
Inverness Inn	103	93
Boyer Automotive	99	97
Gambles	93	103
3-D Sales & Service	90	106
Jiffy Mix	88	108
Palmer T-Birds	78	118
Wolverine No. 2	77	119
Wolverine No. 1	61	135

Over 200 games: E. Buku, 215; R. Nix, 211; J. Fortner, 236, 210; R. Kye, 201; W. Beeman, 235; N. Packard, 225, 206; R. Schenk, 210;



YAZZ HAS HIT 40 OR MORE HOME RUNS FOR THREE STRAIGHT YEARS AND MISSED WINNING THE AMERICAN LEAGUE BATTING TITLE BY .004 POINTS LAST SEASON...

ish, 503; E. Keizer, 501; M. McClanahan, 500; N. Packard, 500.

200 games: S. Hopkins, 233, 206; 206; H. Burnett, 228; R. Fike, 225; R. Knickerbocker, 225; W. Griffith, 223; W. Cruse, 214; G. Lawrence, 214; J. Collins, 212; R. Ba-

ure, 210, 206; T. McClear, 204, 210; L. Hess, 210; R. Kiel, 210; O. Johnson, 209; C. LaRoe, 209; E. Keizer, 207; A. Clemes, 206; G. West, 205; S. Haydock, 205; J. Myers, 204; C. Grounds, 202; D. Hatley, 201; M. Poertner, 200.

Guys & Gals Mixed League

Standings as of April 1

	W	L
Pub No. 1	87	25
Wolverine Bar	74	38
Pleasant Lake Resort	63	49
Pub No. 2	60 1/2	51 1/2
Chelsea Lanes	56	56
Four D's	55 1/2	56 1/2
Team No. 4	55 1/2	56 1/2
Steele Heating, Cooling	52	60
Ted's Standard Service	49 1/2	62 1/2
Norris Electric	43	69
Grass Lake	40	72
Sandbaggers	36	76

Team high game: Pub No. 1, 761.

Team high series: Pub No. 1, 2,115.

Women's high game: N. Collins, 223.

Women's high series: N. Collins, 560.

Women's 150 or over games: M. Degener, 156, 150; M. H. Degener, 151, 171; B. Fritz, 174; N. Packard, 216, 177; N. Collins, 165, 223, 172; P. Elliott, 154, 170; J. Norris, 162; B. Smith, 170, 153.

Women's 450 or over series: M. Degener, 454; B. Fritz, 461; N. Packard, 517; N. Collins, 560.

Men's high games: J. Collins, 206.

Men's high series: D. Eder, 549.

Men's 175 or over games: R. King, 175; A. Sannes, 202, 179; M. Zink, 176; W. Cozzens, 188; D. Eder, 176, 198, 176; D. Fritz, 191, 178; J. Collins, 206, 180; O. Timmerman, 178; J. Degener, 196.

Men's 500 or over series: D. Fritz, 502; D. Buku, 506; J. Collins, 532; J. Elliott, 504; D. Eder, 549; A. Sannes, 545.

Senator Bursley Urges High-Speed Metroliner Train

State Senator Gilbert E. Bursley (R-An Arbor) has urged the National Railroad Passenger Corporation (RAILPAX) to begin formulating plans for the establishment of high-speed "Metroliner" service on the Detroit-to-Chicago route.

"This would involve two things," Bursley pointed out in a letter to RAILPAX chairman David Kendall.

"First, the roadbed would need improvement, electrification and possibly welding of rails, as between New York and Washington."

"Second, the purchase of self-propelled Metroliner cars used on that same New York-Washington run."

Senator Bursley, who served as chairman of the Michigan legislature's Joint Committee on Urban Mass Transportation, stressed the "fantastic" public acceptance enjoyed by the modernized eastern line, where increasing numbers of passengers cruise at 110 mph in vehicles capable of 175 mph.

"From an initial two trains daily, service has risen to 14 trains daily, with advance reservations needed," Bursley mentioned.

"It runs promptly. It minimizes pollution by using electricity. It operates in the black."

Although considering the Metroliner vehicles preferable because of greater schedule flexibility and a quieter ride, Senator Bursley suggested another possible alternative might be the turbo-jet trains, as between Toronto and Montreal, and New York-Boston.

Color is right for kitchenware, for cooking and mixing. Newest hue is clear bright blue, found in porcelain covered cast iron and aluminum ware, ceramics, glass, even kitchen linens. Mushroom, flower and zodiac patterns are also becoming more popular.

Over 600 series: J. Fortner, 639; C. Koenigter, 634; J. Myrning, 600; B. Johnson, 603.

Over 500 series: H. Burnett, 502; D. Coppertoll, 527; A. Clemes, 560; J. Hughes, 506; L. Hughes, 546; E. Buku, 537; R. Nix, 515; P. Smith, 501; R. V. Worden, 506; D. Scott, 529; J. Popovich, 522; M. Sweet, 535; R. Kye, 550; R. Fike, 508; A. Sannes, 507; W. Beeman, 553; N. Packard, 576; T. Dittmar, 514; R. Schenk, 575; K. R. McManis, 519; O. Johnson,

+ Services in Our Churches +

CONGREGATIONAL CHURCH
(United Church of Christ)
The Rev. Daniel Kellin, Pastor
Sunday, April 11—
10:00 a.m.—Church school.
10:00 a.m.—Morning worship.

ST. BARNABAS
EPISCOPAL CHURCH
20500 Old US-12
The Rev. C. Walton Fitch, Vicar
Telephone 426-8815

Thursday, April 8—
9:15 a.m.—Holy Communion.
9:45 to 10:30 a.m.—Vigil.
8:00 p.m.—Evening prayer.
8:20 p.m. to 10:00 p.m.—Vigil.

Friday, April 9—
12:15 p.m.—Good Friday Liturgy.
Saturday, April 10—
7:30 p.m.—Open End discussion.
210 Pierce St., Chelsea.
Sunday, April 11—
9:15 a.m.—Holy Communion, no church school.

ZION LUTHERAN CHURCH
Corner of Fletcher, Waters Rds.
(Rogers Corners)
The Rev. John R. Morris, Pastor

Friday, April 9—
1:30 p.m.—Holy Communion.
Saturday, April 10—
No youth instruction classes.
9:30 a.m.—Luther League to decorate and rehearse.
8:00 p.m.—Martha Circle decorates church.

Sunday, April 11—
6:30 a.m.—Sunrise service, breakfast.
9:00 a.m.—Sunday school.
10:15 a.m.—Festival Worship, Holy Communion.

Monday, April 12—
No choir rehearsals.
Wednesday, April 14—
8:00 p.m.—Church Council.

FIRST ASSEMBLY OF GOD CHURCH
The Rev. Thode B. Thodeson, Pastor

Sunday, April 11—
9:45 a.m.—Sunday school.
11:00 a.m.—Worship service.
7:00 p.m.—Evangelistic service.
Every Wednesday—
7:00 p.m.—Midweek services.

SALEM GROVE UNITED METHODIST CHURCH
Sunday, April 11—
10:00 a.m.—Sunday school.
11:00 a.m.—Worship service.

BETHEL EVANGELICAL AND REFORMED CHURCH
(United Church of Christ)
Freedom Township
The Rev. Roman A. Reineck
Sunday, April 11—
10:00 a.m.—Worship.
10:00 a.m.—Sunday school.

METHODIST HOME CHAPEL
The Rev. R. L. Clemans, Chaplain
Sunday, April 11—
8:45 a.m.—Worship service.

CHURCH OF CHRIST
18801 Old US-12, East
R. D. Parnell, Minister
Sunday, April 11—
10:00 a.m.—Church school.
11:00 a.m.—Worship service.
6:00 p.m.—Worship service.
Every Wednesday—
7:30 p.m.—Bible Study.

OUR SAVIOR LUTHERAN CHURCH
Rebekah Hall, 1194 M-52
The Rev. William H. Keller, Pastor
Sunday, April 11—
9:15 a.m.—Sunday school and Youth Bible Class.
10:30 a.m.—Worship Service.
Every Thursday—
6:30 p.m.—Youth Confirmation Class.

IMMANUEL BIBLE CHURCH
145 E. Summit St.
The Rev. Frank C. Frinkle
Sunday, April 11—
9:45 a.m.—Sunday school, nursery provided.
11:00 a.m.—Morning worship, nursery provided.
7:00 p.m.—Evening service.
Every Wednesday—
Family hour, prayer meeting and Bible study.

FIRST UNITED METHODIST CHURCH
The Rev. Olive Dickens, Pastor
Thursday, April 8—
7:30 p.m.—Choral presentation of Faure's "Requiem," followed by Holy Communion.
Friday, April 9—
11:30 p.m. to 2:45 p.m.—Community Good Friday services at the United Methodist church.

Saturday, April 10—
7:30 p.m.—Life of Christ film, "I Beheld His Glory," in the Sanctuary.
Sunday, April 11—
6:30 a.m.—Easter sunrise service on Lauson property at Cavanaugh Lake.
8:00 a.m.—Easter breakfast in Social Center.
9:00 a.m.—Church school (nursery-adult).
10:00 a.m.—Church school (Nursery-2nd grade).
10:00 a.m.—Worship service.

ST. JACOB EVANGELICAL LUTHERAN CHURCH
12501 Rietmiller Rd., Grass Lake
The Rev. Andrew Bloom, Pastor
Sunday, April 11—
9:00 a.m.—Sunday school.
10:15 a.m.—Divine services.

ST. MARY CATHOLIC CHURCH
The Rev. F. Francis Wahowiak
Thursday, April 8—
7:30 p.m.—Holy Thursday Mass.
Friday, April 9—
12:30 p.m.—Stations of the Cross.
1:00 p.m.—Liturgical services.
Saturday, April 10—
7:30 p.m.—Holy Saturday services and Mass.
Sunday, April 11—
Masses at 6:30 a.m., 8:00 a.m., 10:00 a.m., and 11:30 a.m.

ST. PAUL UNITED CHURCH OF CHRIST
The Rev. Warner Siebert, Pastor
Friday, April 9—
1:30 p.m.—Community Good Friday services at First United Methodist church.
Saturday, April 10—
9:00 a.m. to 12:30 p.m.—Junior High confirmation program.
10:15 a.m.—Youth Choir.
Sunday, April 11—
6:30 a.m.—Easter Sunrise service (nursery provided).
7:30 a.m.—Easter breakfast.
10:30 a.m.—Easter Communion service.

8:45 a.m.—Church school for children's division. Sermon title: "He Is Risen."
Tuesday, April 13—
7:30 p.m.—Church Council.
Wednesday, April 14—
7:00 p.m. to 7:25 p.m.—Choir rehearsal.
7:30 p.m.—Choir pot-luck.

CHELSEA BAPTIST CHURCH
387 Wilkinson
The Rev. James Stacey, Pastor
Sunday, April 11—
10:00 a.m.—Sunday school.
11:00 a.m.—Worship service.
Nursery care available during all services.
8:00 p.m.—Junior and Senior Baptist Youth Fellowship.
7:00 p.m.—Evening worship.
Every Wednesday—
7:30 p.m.—Bible study and prayer meeting.

ST. JOHN'S EVANGELICAL AND REFORMED CHURCH
(United Church of Christ)
Francisco
The Rev. Robert Townley
Sunday, April 11—
10:00 a.m.—Worship service.
10:20 a.m.—Sunday school.
7:30 a.m.—Sunrise service.
8:00 a.m.—Easter breakfast.
10:00 a.m.—Regular service with Communion.

NORTH SHARON COMMUNITY BIBLE CHURCH
Sylvan and Washburn Rds.
The Rev. William Enslin, Pastor
Sunday, April 11—
10:00 a.m.—Sunday school.
11:00 a.m.—Worship service.
6:30 p.m.—Young People's service.
Every Wednesday—
7:30 p.m.—Prayer meeting.

FIRST UNITED METHODIST CHURCH OF WATERLOO
Parks and Territorial Rds.
Mrs. Altha Barnes, Pastor
Sunday, April 11—
9:15 a.m.—Morning worship.
10:15 a.m.—Sunday school.

ST. THOMAS EVANGELICAL LUTHERAN
The Rev. Daniel L. Mattson, Pastor
Sunday, April 11—
10:00 a.m.—Worship service.
11:00 a.m.—Sunday school and bible study.

HAV-A-ELECTRIC
LICENSED ELECTRICAL CONTRACTOR
Re-Wiring and New Work
Farm Wiring
BUILDERS:
We Need Work.
Call 475-7357



BOY SCOUT NEWS

TROOP 425
Boy Scout Troop 425 met Monday evening, April 5. Jim Boyer brought in an overseas short-wave radio. The boys were able to pick up South America, Cuba, Papi, and Spain.

Mr. Branham had Morse Code receivers and senders.
Board of review met to review Tenderfoot Scouts Mike Foster, and Joe Branham. They will become Second Class Scouts on May 3.

A coming camp-out, to be held over Easter vacation was discussed. Jerry Milliken, scribe.

Girl Scouts
JUNIOR TROOP 58
Junior Girl Scout Troop 58 held their meeting Monday, April 5 at the Methodist church. They opened with the pledge of allegiance, and the Girl Scout promise. Treats were served by Annette Fletcher.

Next week the girls will visit the Coca-Cola plant to see how Coke is made. Mrs. Updegraff passed out permission slips.

The girls finished sewing their badge and played "Follow the Leader," "Steal the Bacon," and relays. They drew a picture of an Easter bunny on the top of their heads. Kim Brown won.

Meeting closed with taps, and the squeeze.
Diana Roy, scribe.

TROOP 145
Brownie Troop 145 met Thursday, April 1. The girls elected new treasurers and scribes. They are Kelly Headrick, and Kim Boyce, scribe, and Lauri Hastings and Dawn Connell, treasurer. The girls had a flag ceremony, and learned to tie square knots. Meeting ended with the singing of taps.

—Kelly Headrick, scribe.

CHELSEA MEDICENTER
Wednesday, April 14—
1:30 p.m.—Worship service.

NORTH LAKE UNITED METHODIST CHURCH
Sunday, April 11—
9:30 a.m.—Worship service.
10:30 a.m.—Sunday school.

FIRST CHURCH OF CHRIST, SCIENTIST
1683 Washenaw Ave., Ann Arbor
Sunday, April 11—
10:30 a.m.—Sunday school.
10:30 a.m.—Morning service.
Lesson-sermon: "Are Sin, Disease, and Death Real?"

VILLAGE UNITED METHODIST CHURCH OF WATERLOO
8117 Washington St.
Mrs. Altha Barnes, pastor
Sunday, April 11—
10:00 a.m.—Sunday school.
11:15 a.m.—Morning worship.

ST. JOHN'S EVANGELICAL AND REFORMED CHURCH
(United Church of Christ)
Rogers Corners
The Rev. David J. Kleis
Sunday, April 11—
9:30 a.m.—Sunday school.
10:30 a.m.—Morning worship.

GREGORY BAPTIST CHURCH
The Rev. Grant Lapham, Pastor
Sunday, April 11—
10:00 a.m.—Worship service.
11:15 a.m.—Church school.
6:30 p.m.—Baptist Youth Fellowship.
7:30 p.m.—Evening worship service.

FIRST UNITED PRESBYTERIAN CHURCH
Unadilla
The Rev. T. H. Liang
Sunday, April 11—
9:45 a.m.—Sunday school.
11:00 a.m.—Worship service.
Every Tuesday—
8:00 p.m.—Choir practice.

CHELSEA VILLAGE COUNCIL PROCEEDINGS

April 6, 1971
Council Room

Regular Session
This meeting was called to order by President Folks at 8:00 p.m. Present: President Folks, Clerk Harvey, Administrator Weber, Trustees Borton, Gorton, Musbach, Dmoch, Boylan and Chandler. Others present for the meeting were Police Chief Meranuck, C. D. Director Beach, Electric & Water Supt. Bable, Waste Water Treatment Supt. Leach, Robert Rudd, Dave Brooks and Henry Hauenstein.

Dave Brooks representing the firm of Cummins & Barnard Inc., electrical engineers, discussed with the Council bids that were received for the equipment at the proposed electric sub-station.

Motion by Musbach, supported by Gorton, to accept the recommendations of Cummins & Barnard Inc., electric engineers, and issue a purchase order to Westinghouse Electric Corp. in the amount of \$25,105.00 for equipment for the proposed electric sub-station in accordance with Cummins & Barnard Inc., specifications 921-S1 "Base Bid". Roll call: Yeas all. Motion carried.

Henry Hauenstein representing the firm of Finkbeiner, Pettis & Strout, consulting engineers for the Village sanitary sewers, discussed further with the Council the need for the removal of phosphorous at the waste water treatment plant according to the regulations established by the Michigan Water Resources Commission.

Motion by Chandler, supported by Boylan, to authorize the firm of Finkbeiner, Pettis & Strout to prepare necessary working drawings of equipment needed in the removal of phosphorous according to their recommendations dated November 1969. Roll Call: Yeas all. Motion carried.

Further discussion was held with Robert Rudd representing North American Rockwell and Henry Hauenstein regarding North American Rockwell's request to discharge certain industrial waste into the Village sanitary sewer system. The Administrator was instructed to work with North American Rockwell and the Village consulting engineers to establish acceptable standards controlling the discharge.

RESOLUTION ADOPTING ORDINANCE NO. 74, AS READ, AND AUTHORIZING ITS PUBLICATION
RESOLVED, that the Chelsea Village Council hereby adopts and ordains Ordinance No. 74, as read, establishing a Recreation Board under the provisions of Public Act 156 of 1967, as amended.

BE IT FURTHER RESOLVED, that the Village Clerk is authorized and ordered to have said ordinance published in The Chelsea Standard forthwith.

Motion by Gorton, supported by Dmoch to adopt the above resolution as read. Roll Call: Yeas all. Motion carried.

President Folks submitted for Council approval the name of James Williams to fill a vacancy on the Chelsea Village Planning Commission due to the resignation of Dudley Holmes.

Motion by Chandler, supported by Gorton, that James Williams be appointed as a member of the Chelsea Village Planning Commission to complete the unexpired two-year term of Dudley Holmes. Roll call: Yeas all. Motion carried.

A request was received from Rose and the Estate of Henry Merkel, Sr., to rezone property on Taylor Lane from "A" - Agricultural to "R-1" Residential. The request was forwarded to the Planning Commission for a recommendation.

Motion by Musbach, supported by Gorton, to accept the results of the election held by the Chelsea Fire Department as follows: James Gaken, Fire Chief, Mac Packard, Assistant Fire Chief, Larry Koch, Secretary-Treasurer. Roll call: Yeas all. Motion carried.

The following appointments were submitted by President Folks for approval:
President Pro-Tem, Ardin Musbach.
Village Attorneys, Keusch & Flintoft.
Deputy Clerk, Virginia Harvey.
Village Health Officer, Dr. Otto Engelke.
Deputy Health Officer, Richard Harvey.
Fire Chief, James Gaken.
Assistant Fire Chief, Mac Packard.
Fire Dept. Secretary-Treasurer, Larry Koch.
Fire Commissioner, Arden Musbach.
Police Commissioner, Athel Folks.
Public Work Activities, Eldon Gorton.

MID-STATE FINANCE CORP.
\$25 to \$1,000
For Any Worthwhile Purpose
See or Call
FRANK HILL
at 475-8631
111 PARK STREET
CHELSEA, MICH.

Sanitation & Landfill, Richard Borton.
Parks & Recreation, William Chandler.
Electric, Water & Waste Water Treatment Dept., Arden Musbach.
Planning Commission, William Chandler.
Industrial Promotion, Eldon Gorton.
Parking, Keith Boylan.
Pollution Control, Thomas Dmoch.
Mayor's Exchange, Thomas Dmoch.
State & Federal Liaison, Thomas Dmoch.

Motion by Musbach, supported by Gorton, to approve the above appointments as read. Roll call: Yeas all. Motion carried.

Motion by Borton, supported by Chandler, that a public hearing on the 1971 Village Budget, as required by law, be set for the regular session of the Council to be held on Tuesday, April 20, 1971 at 8:00 p.m. Roll Call: Yeas all. Motion carried.

Motion by Chandler, supported by Gorton, to authorize and direct the Clerk to issue checks in payment of bills as submitted. General Fund \$7,963.24 and M-61 Major Street & Trunkline Fund \$169.06. Roll call: Yeas all. Motion carried.

Motion by Dmoch, supported by Musbach, to adjourn. Roll call: Yeas all. Motion carried. Meeting adjourned.

Richard Harvey, Clerk.

A rose bush grows at Hildesheim, Germany, said to have been planted 1,000 years ago.

One of the most southerly ski runs has been built at Mentone, Ala.



While making repairs protect your loss of normal business profit with

Business Interruption Insurance

See your A-Q Man

A. D. MAYER AGENCY, INC.

115 Park St. Chelsea
"Your Protection Is Our Business"
Phone 479-5061

Auto-Owners INSURANCE COMPANY
Home Office: Lansing, Michigan

Traffic Death Toll Shows Reduction

Michigan has recorded 692 deaths in traffic accidents and eight fatalities in water mishaps in the first quarter this year, according to State Police provisional figures.
The road toll is 89 or 18 percent less than the count of 481 for the same quarter a year ago. The March share of the toll is 138 which was 21 or 18 percent less than 159 in that month last year. It also was the 14th month in succession to show a reduction compared with corresponding months a year earlier.

Water deaths were one more than the seven recorded in the first quarter last year. In addition, three persons were injured. Deaths included six resulting from falls into water and two who died in snowmobile mishaps.

Last year's first quarter included seven deaths and five injured in water accidents. Those deaths included two boat occupants, two resulting from falls into water, and three miscellaneous.

Subscribe today to The Standard

WANTED CEMENT & BLOCKWORK
All types—Poured walls, floors, drives and foundations.
CECIL CAUDILL
(517) 851-3847

Truck Driver Training Scholarships Available

Michigan's trucking industry is currently offering seven \$305 tuition scholarships to enroll in the nationally recognized Truck Driver Training School at Lansing Community College.

The scholarships are open to any eligible person in Michigan, with members of minority groups being given preference.

Deadline for applying for the scholarships is May 1.

For an application, U. S. Department of Transportation physical examination form, or further information, write to:

The Michigan Trucking Association
501 S. Capitol Avenue
Lansing, Michigan 48933

To be eligible, a person must: 1. Be a Michigan resident. 2. Be at least 21 years old. 3. Have a valid Michigan operator's license and an acceptable driving record. 4. Possess high moral character. 5. Read, write and speak the English language. 6. Not be addicted to drugs and excessive use of alcohol. 7. Be able to appear for approximately 160 hours of instruction in four weeks. 8. Be recommended by a Michigan Trucking Association firm or by some reliable person of stature in your community, such as a former high school teacher, a minister, city official or present or former employer.

The Michigan trucking industry is an equal opportunity employer.

LIFELINES:

IT'S A LIE!

There are some things that are not so even if the whole world would vote for it. If everyone were to vote that all people could live to be 100 years old, that would not prevent people from dying.

We may think it is very democratic and tolerant to say that all religions may be equally as good, but there is only one who can decide how to get to heaven. That is God. He made heaven and has the right to invite those He wishes.

What does He say about the right road? Listen:
Jesus said, I am the Way, the Truth, and the Life: no man cometh unto the Father but by Me. John 14:6 For God so loved the world that He gave His Only begotten Son, that whosoever believeth in Him should not perish, but have everlasting life. For God sent not His Son into the world to condemn the world, but that the world through Him might be saved. He that believeth on Him is not condemned; but He that believeth not is condemned already, because he hath not believed in the name of the only begotten Son of God. John 3:16-18.

IMMANUEL BIBLE CHURCH
A Bible-believing church with a Christ exalting ministry.
Rev. Frank C. Frinkle, pastor

IMMANUEL BIBLE CHURCH
A Bible-believing church with a Christ exalting ministry.
Rev. Frank C. Frinkle, pastor

IMMANUEL BIBLE CHURCH
A Bible-believing church with a Christ exalting ministry.
Rev. Frank C. Frinkle, pastor

IMMANUEL BIBLE CHURCH
A Bible-believing church with a Christ exalting ministry.
Rev. Frank C. Frinkle, pastor

IMMANUEL BIBLE CHURCH
A Bible-believing church with a Christ exalting ministry.
Rev. Frank C. Frinkle, pastor

IMMANUEL BIBLE CHURCH
A Bible-believing church with a Christ exalting ministry.
Rev. Frank C. Frinkle, pastor

IMMANUEL BIBLE CHURCH
A Bible-believing church with a Christ exalting ministry.
Rev. Frank C. Frinkle, pastor

IMMANUEL BIBLE CHURCH
A Bible-believing church with a Christ exalting ministry.
Rev. Frank C. Frinkle, pastor

IMMANUEL BIBLE CHURCH
A Bible-believing church with a Christ exalting ministry.
Rev. Frank C. Frinkle, pastor

IMMANUEL BIBLE CHURCH
A Bible-believing church with a Christ exalting ministry.
Rev. Frank C. Frinkle, pastor

IMMANUEL BIBLE CHURCH
A Bible-believing church with a Christ exalting ministry.
Rev. Frank C. Frinkle, pastor



Your Easter Season Invitation...

To Meet

THE SINGING FAIRFIELDS

Evang. Chas. - Eloise - Valerie Kaye

FIRST ASSEMBLY OF GOD

14900 Old US-12

APRIL 8-18 at 7 p.m.
except Monday and Saturday

T. B. Thodeson, pastor Church Telephone
522-4510 475-2615

Distinctive

WEDDING

ANNOUNCEMENTS

INVITATIONS

INVITATIONS or ANNOUNCEMENTS...

Let us provide you with the very finest printed or engraved invitations and announcements. Make certain that your wedding stationery is of top quality and conforms to correct social requirements. We can advise you on these important details.

THE CHELSEA STANDARD
Commercial Printing Department

Chelsea Woman's Granddaughter Weds in Farmington

Miss Karen Sue White and David R. Neal were married in Nardin United Park Methodist church at Farmington, Saturday afternoon, March 13. The bride, who is the daughter of Mr. and Mrs. Richard M. White of Greythorne Ave., Farmington, is the granddaughter of Mrs. Burt White of 414 McKinley St., Chelsea.

Mr. and Mrs. Herbert R. Neal, also of Farmington, are the parents of the bridegroom.

The Rev. William Mervin officiated at the ceremony, and Mrs. Robert Kusch, sister of the bridegroom, was soloist.

The bride, given in marriage by her father, wore a white net gown with lace trim on the bodice and sleeves, and a white picture hat with net panels. She carried white carnations with pink rosebuds.

Maid of honor, Nancy Weedon, was attired in a chiffon gown in blue and lavender print, and carried lavender carnations and blue star flowers.

William Strabel was best man, and the ushers were James Neal, brother of the bridegroom, and William Tait.

Mrs. White was dressed in a pale green gown, while Mrs. Neal wore a gown in pink.

Approximately 100 guests attended a reception in the church parlor in honor of the couple before they left for a short honeymoon in western Michigan. The couple will live in Kalamazoo, where the bridegroom is a senior at Western Michigan University. Both are graduates of North Farmington High school.

WAY TO SPRAY

Spray painting is a quick and easy way to add new verve to articles that can be placed in an open space. When painting, don't cause dripping and running by holding the can too close to the surface. Remember, paint very thin, wet coats and allow adequate drying time between each coat for best results.

TIPS for your TOP from



TODDY and FRAN

It's obvious you couldn't go wrong giving a gift certificate for a beauty "treatment" — be it a hairdo, a wig or just a manicure — be it a tint, a permanent, or a wig cleaning and re-setting — whatever it is if it has to do with making some woman look prettier than ever, it's a winner. So for Easter, give the gift you can't go wrong on — a gift certificate for your favorite friend or relative from our salon. Rest assured our operators will treat them so nicely they'll appreciate you more when they collect your gift than when you gave it to them if that is possible.

Magic Mirror Beauty Salon
Phone 665-0816
5585 Jackson Rd., Ann Arbor

Altar Society Joining Church Women United

Monthly meeting of St. Mary Altar Society was held Monday evening, April 5, at 8 p.m. in the school hall with 23 members and two guests present.

Mrs. Harry LaRose, president, led the group in an opening prayer.

Serving on the April Altar Committee are Mrs. Vince Burg, and Mrs. Dudley Foster.

Mrs. Dennis Guinan, Good Samaritan Committee, reported on the success of the Antique Sale. Four ladies from St. Mary helped at the sale. Members of St. Mary worked more than 18 hours at the Congregational church sorting and mending clothes for the needy, it was reported.

The president stated that a request has been made for the VA Hospital. A motion was made by Mrs. Loretta Doll, that a collection be taken up for this purpose. Motion was seconded by Mrs. Ruth Zeeb, and \$9 was collected for the VA Hospital.

Mrs. Jack Menkel, a representative from Church Women United, presented an outline of her work, and participation in this organization. St. Mary Parish has been invited to participate in the fall program, "World Community Day." Mrs. Menkel stated that to be official members of Church Women United, dues must be paid. It was voted by members that St. Mary be responsible for the "World Community Day," in the fall, and that they pay their dues.

Mrs. Henry LaRose read an invitation to members to attend a meeting at St. Paul United Church of Christ on April 23, at 7:30 p.m. to hear a talk by Dr. Harold Lockett, a child psychiatrist from Ann Arbor.

It was decided to have a potluck supper for the mothers and daughters of the parish on Monday, May 3 at 6:30 p.m. at the school hall. Chairman for the supper are Mrs. Charles Sullivan and Mrs. Richard Bruck.

The Rev. Fr. Wabowiak announced that May Devotions will be held on Thursday evenings at 7:30. May Crowning will take place on the first Friday of May. The Rev. Fr. Wabowiak led the members in a closing prayer.

Coffee was served by Mrs. James Gaken and Mrs. August Dorner.

Home Economics Study Groups Calendar

April 7—Goddess, Mrs. Melvin Carter, 2116 E. Joy Rd., Ann Arbor, 10:30 a.m.
April 8—North Superior, Mrs. Alex McCalland, 10704 North Territorial Rd., Plymouth.

LEGION AUXILIARY

The April meeting of the American Legion Auxiliary was held April 6 at the Legion Home, Cavanaugh Lake, with 12 members and one guest present.

Discussion was held on the Rummage Sale. It was decided to hold it April 30 and May 1 at the Sylvan Town Hall. All members were asked to contribute, and work as possible.

It was announced that the kitchen shears have arrived, and are on sale from the members.

Plans were discussed for the Mother-Daughter Banquet to be held May 4 at the Legion Home. It will be a potluck dinner. District president and secretary will be honored guests for the occasion. A regular meeting will follow the dinner at 8 p.m.

Guides Given To Help in Buying Children's Clothes

Most children aren't particularly wild about shopping for clothes. Berneta Kahabka, clothing specialist for Michigan State University's Co-operative Extension Service has some helpful suggestions.

When you shop without your child along for fitting, she says, have height, weight and waist measurements handy. Clothes should have roomy armholes and crotch, and be loose-fitting around the neck, arms, legs, and waist. But remember that grossly oversized garments restrict movement as much as those that are too small.

Easy care fabrics—washable and colorfast—are most practical for active children. Simple styles in keeping with the general lines of current fashions are usually best.

Toddler's need features that make it easy to dress themselves—front openings, medium or large-size buttons, easy-sliding zippers with big tabs, and elasticized wastebands. Growth features—such as wide seams and hems, gathers and tucks that may be let out, and adjustable straps and cuffs—are helpful. Two-piece outfits, separates, and sleeveless or raglan styles also allow for growth, says Miss Kahabka.

Area, that receive most wear—pocket corners, buttonholes, knees, elbows and necklines—will last longer if reinforced with extra stitching or fabric.

Bonded Fabrics Have Both Good, Bad Features

Bonding is a magic word for many sewing enthusiasts.

But, there are good and bad sides to this popular fabric, say specialists at Michigan State University.

Bonded fabrics are the result of a process that sticks two layers of cloth together by means of a foam or other adhesive substance. It can also consist of a layer of foam backed to a single layer of fabric.

Bonded fabrics are easy to handle in stitching. They are comfortable, and tend to be wrinkle resistant. Bonding also eliminates raveling of fabric edges.

But, say MSU specialists, bonded materials have their limitations:

- 1) The adhesive used in bonding can be dissolved by certain spot removers and dry cleaning processes.
 - 2) Both face and backing may shrink excessively even in a single washing.
 - 3) Some bonded fabrics stiffen after dry cleaning.
 - 4) Although bonded fabrics are easy to stitch, the fabric weight and body adds bulk in seams.
- Hangtags and labels also give useful information. For instance, "The bond is guaranteed against separation of the face and back in normal use of life expectancy of the garment if care instructions shown on the tag are followed, and if the registration on the back is returned in 10 days."

Another hangtag might say, "This fabric has been continuously tested for resistance to delamination and dimensional stability (shrinkage)."

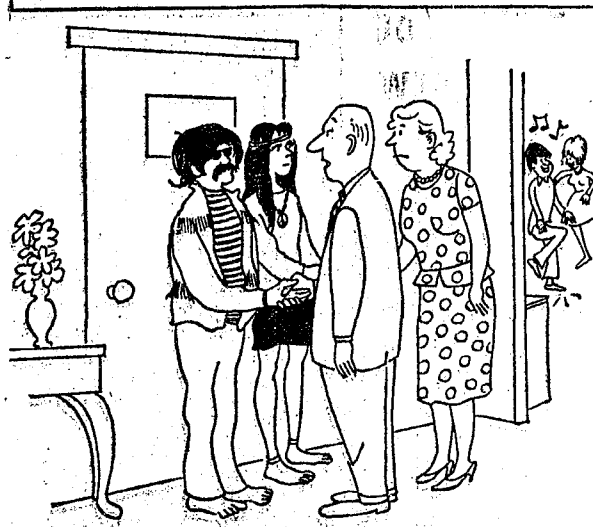
The Michigan State Legislature approved the Enabling Act to create the Huron-Clinton Metropolitan Authority in 1939 and the referendum vote on the proposed Authority was approved in the Nov. 5, 1940 election by the people of the counties of Livingston, Macomb, Oakland, Washtenaw and Wayne, and approved by the electors 2 to 1.

A half cup serving of potatoes contains about 65 calories. Labor Day is Sept. 6.

PLAN A CAREER. Take Courses at Washtenaw Community College



Generation Gap U.S.A.



"Good nite, it's been a very interesting ordeal"

School Board Briefs

At the Board of Education meeting Monday evening, April 5, present were President Irwin, members Smith, Hopkins, and Haselschwardt, Business Manager Mills, Principals Lane, Conklin, and Wojcik, and Assistant Principal Fauble.

Several guests were present. Meeting was called to order by President Irwin at 8:05 p.m.

Motion by Haselschwardt, supported by Smith, to accept the minutes of the March 16 meeting as read. All ayes.

Motion by Hopkins, supported by Haselschwardt, to pay general fund bills of \$12,304.56. All ayes.

Motion by Hopkins, supported by Haselschwardt, to go into executive session for student hearings at 8:15 p.m. All ayes.

Meeting called back to order at 11:30 p.m.

Motion by Hopkins, supported by Haselschwardt, to continue the following teachers on tenure and offer contracts for 1971-72: Helen Bareis, Philip Bareis, James Bechthelmer, George Bergman, William Coelius, Dorothy Conlin, Carl Genske, Stuart Glazer, Kenneth Larson, DiAnn L'Roy, Lois Marshall, William Moore, Thomas Morrison, George Prinzing, Katherine Riedeman, Marian Rybo, Mary Sappala, Jon Schaffner, Terry Schreiner, Alfred Smith, Paul Terpestra, Orville Tompkins, Pat Wade, Lynn Williams, June Winans, Richard Bareis, Barbara Brown, Patrick Clarke, Lillian Conklin, Betty Cox, James Hoeft, James Hoffmeyer, Lyman Johnston, David Kniesly, Margaret Koch, Bert Kruse, Karen La Rue, Ed Lauson, George Marshall, Judy Parker, Alice Rawson, Paul Simon, Leonard Solomon, Alice Steinbach, Cheryl Turner, Don Young, Mrs. Mary Lou Bower, Mrs. Cynthia Carpan, Mrs. Karen Pink, Mrs. Janet Fuks, Mrs. Anne Hanna, Mrs. Sharon Hodgson, Mrs. Marilyn Lopez, Mrs. Vivian Michelson, Mrs. Lois Moore, Mrs. Jennie Morgan, Miss Diana Myers, Mrs. Sherri Plank, Mrs. Margaret Senne, Mrs. Judy Stewart, Mrs. Dorothy Thodeson, Mrs. Jo Ann Thornton, Miss Mary K. Weber, Mrs. Anne Morgan, Mrs. Bernice Packard, Mrs. Creta Winkle, Mrs. Florence Hakala, Mrs. Alberta Stein, Mrs. Nicole Hite, Mrs. Wanda Edmonds, Mrs. Patricia Coelius, Mrs. Cynthia Carpan. All ayes.

Motion by Haselschwardt, supported by Smith, to place the following teachers on probationary period, and issue contracts for 1971-72: Nancy Gilbreath, Kathleen Hanke, Charles Kelly, Joseph Rosse, James Tallman, Barbara Wenk, Jane Cummings, Joan Liang, Warren Mayer, James Thompson, Charles Waller, Mrs. Judith Hannukola, Mrs. Dianne Veenkant, Mrs. Cynthia Mortensen, Mrs. Sarah Fawcett, Mrs. Cara Poplowsky, Mrs. Mary Hafer. All ayes.

Motion by Hopkins, supported by Smith, to accept the resignation of Mrs. Marianne Williams effective June 11. All ayes.

Motion by Haselschwardt, supported by Smith to accept the resignation of Fred Elmore, effective June 11. All ayes.

The board discussed its proposed policy on discipline, suspension and expulsion and will take action to adopt a policy on April 18.

April 20 is to be an In-Service day, with school dismissed at 2:30 p.m.

April 29 is a Parent Conference day, with school dismissed at 11:30 a.m.

Business Manager Mills reported School Bus Safety Week is to be April 19-25.

The Policy Review Committee will meet April 12 at 8 p.m.

Future Planning Committee will meet April 7 at 8 p.m.

School District State Aid has been cut by approximately \$15,000 by order of the Governor which cut all state aid by 1/2 percent of the total state aid and local taxes. Also, the district has received 60 percent of the state aid payments for February and March, the 40 percent of the two payments not received amounts to approximately \$100,000. There has been no assurance as to exactly when, if ever, this amount will be received. Payment will be subject to the availability of state funds.

Howard Haselschwardt, chairman of the Board Negotiation Committee, reported on the first negotiation meeting, held March 30. The OBA proposal and ground rules were discussed.

TEACHER TOPICS

Junior High Counseling Beach School Counselor

You can find out a wealth of information about a suspect by looking through, of all things, his garbage. Dick Tracy figured this out decades ago; I arrived at the same conclusion belatedly this year after several concerned parents called me to find out what kind of trouble their kids were getting into at school. Most began, "While doing the wash this week, I emptied out my son's pockets and came across a counseling slip. I asked him what it was all about, and he was vague, too vague—said that he and the counselor just had a friendly chat. What kind of trouble is he really in?"

Such conversations with parents have led me to believe there are numerous misconceptions about the role of the junior high counselor. This article is an attempt to dispell some of the misconceptions.

At the beginning of each year, the junior high counselors visit the new 6th graders in their classrooms. We begin our presentation by asking them just what they think we do in our jobs as counselors. Their answers are often appalling—the gist of them being that we solve all of their problems for them. To them, we seem to be the Ann Landers for the younger set.

They always seem surprised when we tell them that we aren't going to solve their problems—but we will help them with their decision making. Students, like everyone else, are confronted daily by decisions to be made. The difference between a good decision and a bad decision may spell the difference between a good day or a lousy day. The first decision we make is whether we are going to get out of bed and start the day, or are we going to convince ourselves that we are sick, and should not move a muscle. Thus it is easy to go through life forgetting all about the fact that we are constantly making decisions; we are constantly making decisions, making chances confront us repeatedly.

As counselors, we operate on the premise that it is easier to stay out of trouble than it is to get out of trouble, and the way to accomplish this is through good decision making.

Talking with a counselor before making an important decision is a good way to explore all of the consequences of different possible courses of action. After reviewing all of the possibilities, the student has to make the decision himself. If the decision is a good one, he alone takes the credit for it. If the decision is a "bummer," then he alone takes the rap for it.

The goal of the counseling is to impress on the student that he is the product of his decisions, and he is responsible for all of them. Oftentimes the student says, "Tell me what to do in this situation!" Tell me what to do, in my book is equivalent to "take the blame if things don't work out right." When a person makes his own decisions, he is much more committed to them than if others make them for him. Thus, when he makes the decision, there is a better chance that he will act on events that effect his choice, rather than passively watch his life unfold as if he were watching a drama.

So, what kind of decisions are we talking about? These decisions are often not what we, as adults, would consider monumental decisions. They often involve such issues as which girl-friend to like and which one to hate; what to do about a friend who no longer treats one like a friend; or whether

to choose between a new mini-bike or pony. Proportionally these decisions are as monumental to the junior high student as are the decisions to buy a car or house to us. By learning to make wise decisions when they are young, hopefully will help them to make wiser decisions when they are older.

Although decision making is our trade, it takes second place to our interest in the students as individuals. We are not only genuinely interested in their lives, but by the nature of our jobs, we have time to listen to them, to give them individual attention, and to let them know that if they would ever like to talk to an adult about a decision to be made, or just about anything that affects them, we will be glad to listen.

At the end of our presentation to the sixth graders, we rather immediately let them know that we are good at two things: listening and not blabbing. Most students feel that next to individual attention, privacy is the next most scarce commodity in their lives.

St. Louis Team Loses to School in Philadelphia

The Rev. Fr. Germano, the Rev. Fr. Umberto, coach and manager John Bevier of the St. Louis School for Boys, traveled to Philadelphia, Pa., this past week-end with the St. Louis school baseball team, to be week-end guests of the Don Guanella School in Philadelphia. Members of the team included Wayne Kennedy, Ronny Rhoades, Kevin Mack, Gary Ponta, Rex Lawrence, Martin Cook, and Patrick Cosgro.

The boys played an invitational basketball game against the team from Don Guanella, losing by the slim margin of 51 to 48. A banquet and dance followed the game, and the girls from St. Mary's school in Philadelphia attended the after-dinner festivities.

While in Pennsylvania, the boys paid a visit to Valley Forge, before returning home Sunday afternoon.

The Don Guanella boys will pay a visit to St. Louis school in May when they will come for a week-end visit.

Sunday evening, the Youth Group of the First Congregational church, under the direction of the Rev. Daniel Klein, visited St. Louis to host an Easter party for the boys. Basketball was played, and they all danced to new records.

Members of the Youth Group presented the boys with Easter baskets for the occasion.

Easter Vacation at St. Louis begins today, April 8, with the boys returning Sunday afternoon, April 18.

HANDY HERBS

It's handy to have a pinch of fresh chives, parsley or dill at your fingertips when you're whipping up gourmet dishes. A row of clay pots on a sunny, cool window sill, planted with a variety of herbs, will give your kitchen a professional air, and add a marvelous decorative note as well.

As counselors, we can accommodate both of these needs.

So, I hope that two misconceptions about counselors and counseling have been dispelled by this article: 1) That when a student comes to the counselor, he has either done something wrong, or would have done something wrong if he had thought of it in time, and 2) That the counselor is a curious blend of FBI agent and psychoanalyst. I neither have a badge nor a couch.

When a student sees a counselor he is learning to make decisions and learning to feel more comfortable talking to adults. Who knows, the generation gap may not be closing; but perchance we can stop it from widening.

Jim Thompson
Counselor, Beach Middle School.

Address any correspondence to the CBA, in care of P.O. Box 141, Chelsea.

LADIES!

Save yourself a lot of extra work by using

PAPERWARE

for your EASTER DINNER

We have an excellent selection of colorful paper plates, table cloths, place mats and napkins, not to mention our new shipment of plastic glasses.

Let Your Imagination Be Your Limit!



TAIL FEATHER BOUTIQUE

105 N. Main St.
Chelsea

VILLAGE BEAUTY SALON

LORETTA PANNONE, Owner-Operator
CINDY - EULA - JANICE - SARA

107 N. MAIN PHONE 475-5421

OPEN MONDAY THRU SATURDAY

Evenings, Wednesday and Thursday

Cornelia's Jewels presents

a birthstone for each child

Lady Cornelia
in 14 Karat Gold

As Cornelia, famed mother of Ancient Rome, said of her children... "These are my jewels". A graceful and elegant symbol of pride in motherhood, this Lady Cornelia® ring is fashioned in 14K gold, Florentine finish, smooth inside against the finger and set with synthetic birthstones... one for each child or grandchild. Truly a lasting treasure.

Priced from \$30.00

WINANS JEWELRY

Use Our Convenient Payment Plan

SUCCESSOR TO THE AUTOMATIC WATER SOFTENER

THE REYNOLDS SOFT-SENSOR

THE WATER CONDITIONER THAT HAS A MIND OF ITS OWN FOR SOFT, RUST-FREE WATER

THAT'S RIGHT! Every night the Soft-Sensor "takes its own pulse." If it needs recharging, it recharges itself... if not, it checks itself the next night. The Soft-Sensor recharges itself ONLY when it needs it, and always when it needs it.

□ All the soft water you need □ Simple, dependable construction
□ Saves salt-maintenance cost □ "Lifetime" all-through tank
□ It "sleeps" when you're away from home □ Remarkably low in cost

PURCHASE OR RENTAL PLAN

Other brands of water softeners can often be converted to the Soft-Sensor. Call our direct factory line without charge 1-800-552-7717 or call Ann Arbor 662-5676

The Reynolds Soft-Sensor is a product of:
REYNOLDS WATER CONDITIONING CO.
12100 Cloverdale Avenue / Detroit, Michigan 48204

Serving Washtenaw County with quality water conditioning products for 38 years.

we have

\$100,000

a day available for mortgage loans

It's spring and Ann Arbor Federal Savings is blossoming out with mortgage money. About \$100,000 a day for home financing. The "FED" is making 90% CONVENTIONAL MORTGAGE LOANS up to \$36,000. If your house plans call for more than \$36,000 the "FED" has other mortgage plans to fit your needs. The mortgage specialists at the "FED" believe that this is a good time to buy or build. Terms are the best in years and you'll save money by buying now.

AAFS
the savings and loan specialists
ANN ARBOR FEDERAL SAVINGS

CHELSEA VILLAGE COUNCIL PROCEEDINGS

March 30, 1971
Council Room

Special Session.

This meeting was called to order by President Fulks at 8:00 p.m. Present: President Fulks, Clerk Harvey, Administrator Weber, Trustees Borton, Gorton, Musbach, Dmoch, Boylan and Chandler. Others present for the meeting were Ren Hutzler, Luther Kusterer, Herbert Paul, Claude Arnett and Elwyn Beach.

This meeting was called to hold a public hearing to consider adopting new water rates.

President Fulks summarized the need for a revision of water rates according to the recommendations presented by the engineering firm of Ayres, Lewis, Norris and May, water engineers.

After a discussion with the residents present for the public hearing the following resolution was introduced.

RESOLUTION

WHEREAS, the Chelsea Village Council held a Public Hearing and published a notice of the same in accordance with Section 3 of Chelsea Village Ordinance No. 56,

NOW THEREFORE, BE IT RESOLVED AND IT IS HEREBY RESOLVED, that the following water rates be adopted and become effective April 1, 1971 and shall remain to be billed on a quarterly basis:

Commodity Charge

0-20 M	75c per M
20-100 M	60c per M
100-300 M	50c per M
300-1,000 M	40c per M
1,000 & over	30c per M

METER RATES — PER QUARTER

Meter Size	Minimum Usage	Service Charge	Commodity Charge	Quarterly Minimum Charge
1/2 in. & smaller	8 M	\$ 3.00	\$ 6.00	\$ 9.00
1 in.	24	8.00	17.40	25.40
1 1/2 in.	36	10.00	24.60	34.60
2 in.	60	13.00	39.00	52.00
3 in.	150	20.00	88.00	108.00
4 in.	270	35.00	148.00	183.00
6 in.	540	60.00	259.00	319.00

Other Charges

A surcharge of \$100.00 per year or fraction thereof shall be paid for all private fire protection sprinkler system lines to cover cost of monitoring and periodic flow tests.

A service charge of \$1.50 for shutting off or turning on curb stops, regardless of meter size.

Tap-in charges for up to one-inch services will be \$925.00 per connection, in addition to the cost of the meter. For any tap-in larger than a one-inch service, the charge will be the additional cost of material required for the larger tap-in.

The maximum allowable consumption per meter size per quarter shall remain unchanged as follows:

Washtenaw Community College

ALL CLASSES ON NEW HURON CAMPUS

Meter Size

Meter Size	Maximum Consumption
1/2 in.	100 M
1 in.	260 M
1 1/2 in.	330 M
2 in.	550 M
3 in.	850 M

Over 2 in. based on actual conditions at user's premises.

Consumption in any given quarter which exceeds these maximums will require that the meter be replaced with a proper size meter at the user's expense. This charge will be predicated on the cost of the new meter, plus installation costs, less allowance for the original meter.

Motion by Chandler, supported by Borton to adopt the above resolution as read. Roll call: Yeas—Borton, Boylan, Chandler and Fulks. Nays—Gorton, Musbach and Dmoch. Motion carried.

Motion by Borton, supported by Dmoch to adjourn. Roll call: Yeas all. Motion carried. Meeting adjourned.

Richard Harvey, Clerk.

Thomson Brothers on Kalamazoo Tennis Team

Brothers Steve and Tom Thomson, formerly of Chelsea, presently of Grosse Pointe, are playing as a doubles team on the Kalamazoo College tennis team this spring. The brothers will be playing with the team when they meet the University of Michigan in Ann Arbor on Wednesday, April 14. They will be playing in the number three spot. In singles, Tom will play in the number three spot, while Steve will play either six or seven.

Girls Track Team Defeats Dexter Group

Despite freezing weather, and snow, Chelsea's girls track team met with the team from Dexter, Friday afternoon, April 2, to be the first Chelsea team to compete outdoors this season. According to Coach John Bauer, the cold dampened the girls' enthusiasm a bit, although most of the events were run despite the temperature. Times were somewhat slower than normal, Bauer estimated, although that also could be because of the chilliness.

Alicia Pierson won first place in the long jump event with a jump of 13'9". She also took a first place in the 100-yard dash.

Janet Sibley won first place in the high jump with a jump of 4'0", and she won the 80-yard hurdles. Vicki Meyer placed first in the eight pound shot put with a throw of 29'6".

Winning relays for Chelsea included the 440-yard relay, which broke a school record with a time of 66.7 seconds. Former record time was 67.1 seconds. Participating in this event were Pat Poertner, Alicia Pierson, Robin Terns, and Janet Sibley.

Medley relay took first place also. Runners on that relay were Bonnie Wengren, Alicia Pierson, Pat Poertner, and Janet Sibley.

Robin Terns took a second place in the 100-yard dash, while Lorry Fritz, a newcomer to Chelsea's team, took second place in the 50-yard dash.

Next meet for the lady runners is April 14, at Lincoln Park. Coach Bauer stated that Lincoln Park has the best high school track team in the state, "other than Chelsea," so the meet should be a good one.

Track Team Places 20th in Spartan Relays

Chelsea's track team participated in the Spartan Relays at East Lansing, Friday afternoon, April 2. The Bulldogs placed in the top 20 teams in the event which attracted close to 60 participating teams.

The event, which is an indoor track meet, is equivalent to a state type meet. Coach Burt Kruse stated this past week. He indicated that Chelsea's performance shows promise for a better finish in the state meet later in the year. "If the team progresses, they should place high in the state meet," Kruse commented.

Only three points gained for Chelsea were won by the shuttle hurdle relay, which placed third with a time of 30.1 seconds. Participants on that team included Mark Collins, Mitchell Heard, Jeff Hughes, and Larry Gorton.

The 880 relay team placed sixth, with a time of 1:37.3. With better hand-offs the team would have been in one of the five point-earning places, Kruse said. Team members were Mark Collins, Larry Gorton, Kim Aronson, and Jeff Hughes.

MERCURY FINDERS.

Using new techniques, hydrologists can now detect dissolved mercury concentrations as small as one part per 10 billion parts of water.



DOING THE JOB: Clusters of plastic barrels, partially filled with sand, are proving effective in preventing serious accidents at several exits on Michigan freeways. Top photo shows vehicle crash into barrels at high speed. Below is aftermath of collision at I-496 Freeway exit in Lansing. In seven accidents at this site, drivers have been able to back off and continue on.

Experimental Safety Device Saving Lives at Road Exits

Lansing—Research and experimentation by the Michigan Department of State Highways is paying off by helping to save motorists from injury or death in moments of indecision at freeway exit ramps.

Accidents at some freeway exit ramps have resulted from a combination of higher freeway speed, unfamiliarity with the desired exit and moments of indecision whether to use or not to use a particular exit.

Reduced angles on exit lanes and improved advance-warning signs have contributed to a reduction in ramp accidents. But for those few deficient exits that still have hazardous roadside obstacles in close proximity to the turn-off lane, Department safety engineers are now providing safety cushions around such obstacles.

Three different types of cushioning have been installed at eight different locations on the state highway system. The type that has been used most extensively so far are specially constructed plastic barrels with interior compartments partially filled with sand.

Known as the "Fitch Inertial Barrier System," a cluster of such barrels can stop a car traveling up to 60 miles an hour with a minimum of damage and injury.

The yellow plastic barrels have been installed at four locations on the I-96 and I-496 Freeway system around Lansing. Proof of their effectiveness has been demonstrated best at the Trowbridge Rd. exit (Michigan State University) on Northbound I-496.

A cluster of 38 plastic barrels was positioned last December in front of the guardrail divider at the Trowbridge Rd. exit. The

barrels have been struck by errant motorists at least seven times. Each time, the motorist has been able to back off and continue on.

Department engineers can only speculate on how many lives have been saved or injuries and damage prevented. They are certain, however, that if the barrels had not been there, hard impact with the unprotected guardrail would have resulted in serious vehicle damage as well as injuries and possibly death.

At this one location alone, 32 barrels have been destroyed. At replacement cost of \$125 a barrel, \$4,000 worth of barrels have turned seven potentially hard collisions into relatively soft ones.

A different type of cushion—clusters of empty collapsible metal

Churches To Present

Easter Cantata at Beach Junior High

"Hallelujah, What A Savior" a John Peterson cantata will be presented tomorrow evening, Good Friday, 7:30 p.m. at the Beach Junior High school. Local "Inspiration" churches, North Sharon Bible, Faith Community, Iron Creek, and Stockbridge Baptist church will present this piece, under the direction of Mrs. Frank Frinkle.

No admission will be charged, and no offering taken.

This cantata was presented Sunday afternoon, April 4, at the Chelsea Methodist Home for the residents.

barrels—has been installed at two locations in the Detroit area. One is at the Larned Ave. exit on I-696 and one at the Dix-Toledo exit on I-75.

Another kind of cushion involving plastic containers filled with salt water has been positioned in front of median dividers at Eight Mile and Woodward Ave.

Research and experimentation on impact attenuators will continue with placement of such cushions at other locations on the state highway system.

Home Economists Tour Facilities of Chelsea Milling

Members of the Professional Home Economists in-Business association, a group of professional home economists working in business, toured the facilities of Chelsea Milling Co., Tuesday evening, April 6. Thirty-five members of the group, which is a national organization, met at the Tailfeather Boutique, owned and operated by Mrs. Thomas Dittmar, a member of HEIB, before touring the milling plant.

A catered dinner, prepared by the Pretzel Bell, and provided courtesy of the Milling Co., was served to the group, which counted members from Detroit and Toledo.

The evening was hosted by Mrs. Dittmar, who was responsible for making arrangements for the group.

Broader Curriculum Offered CHS Students

Course Offering: Handbooks, a booklet dealing with tentative offerings of courses presented at Chelsea High school next year, will be distributed to high school students, except seniors, Thursday afternoon, April 8.

The booklets, which will carry brief descriptions of classes offered at the High school, will help parents and students decide their future needs, and help plan for their future through constructive courses at the high school level, high school counselor George Bergman said this past week.

The Board of Education has not yet given final approval to this slate of courses, Bergman stated, pending notification from the state concerning funds for the coming school year. A shortage of funds could cause certain courses to be dropped, the counselor stated, although he was not sure just which courses would be "sacrificed."

Programming for next year's class schedules will begin shortly after spring vacation, although school officials will not have a final schedule of classes until next fall, when the state money will be finalized.

Bergman noted that this coming year's course offerings include the most specific slate of classes ever offered at Chelsea High school. More classes, to teach more and more specific courses are to be the trend in the coming years in education.

At present, a senior needs a total of 20 credits to graduate from Chelsea High school. Of those credits, 8 1/2 must be in the field of English, while 2 must be in physical education. One year of math, and one year of science, coupled with United States History in the junior year, and American government in the senior year fill out Chelsea's "required" courses. That leaves 10 1/2 courses which a student is free to

elect. These may range from shop and apprentice-type courses to academic offerings.

Chelsea school officials hoped that parents and students would take advantage of a free moment over the upcoming holiday to browse through the new handbook. What a student learns in high school is more than ever an extension of the "do your own thing" philosophy prevalent today. It is hoped that Chelsea's school children will make the most of this opportunity.

Pam Siebert 2nd In District Spelling Bee Competition

Six Chelsea youngsters, two from each of the elementary schools, and two from the Junior High school, participated in the District Spelling Bee, sponsored by the Detroit News, Wednesday, March 31. School champions and the runners-up from school spelling bees held earlier in the month, competed against other school champions in the contest, which draws spellers from the 6th through 8th grades.

Pam Siebert, 8th grader, and Beach school champion, placed second in the contest, which attracted students from across this area, while Greg Ringe, South school champion, and 5th grader, placed sixth over-all in the contest.

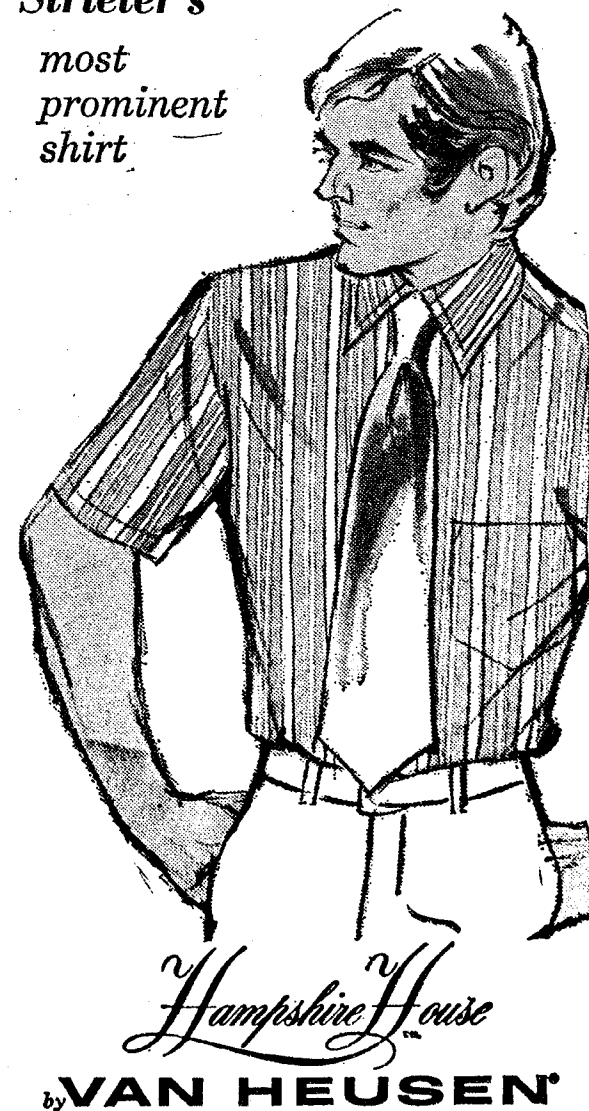
Other participating Chelsea students included Kevin Lyle, Bruce Fairbanks, Susan German, and Linda Simon.

Pam is the daughter of the Rev. and Mrs. Warner H. Siebert, while Greg is the son of Mr. and Mrs. Richard Ringe.

Telephone Your Club News To GR 5-3581



Strieter's most prominent shirt



We're into stripes in a big way! A big favorite—Van Heusen's use of bold strokes on soft color backgrounds. Handsome in 80% Dacron* polyester, 20% cotton with Bradley long-point collar.

\$8.00

Others from \$6.00

STRIETER'S MEN'S WEAR
"The Place To Go For Shirts You Know"

AMATEUR TALENT SHOW

Presented By

CIVITAN CLUB OF CHELSEA

SATURDAY, APRIL 17

Chelsea High School Auditorium

8:00 p.m.

Proceeds for Community Service

ADULTS: \$2.00 UNDER 18: \$1.00

Tickets available at Strieter's Men's Wear, Foster's Men's Wear, Winans Jewelry, Chelsea Lumber, Meabon's TV, Al Nalli Music, and any Civitan Club member.

SPECIAL thru Wednesday, April 14, 1971

SMALL DRINK

Root Beer - Vernor's - Sprite - Coke

FREE with CHEESEBURGER

60¢

CLOSED ALL DAY EASTER SUNDAY

(Home of fine Brazier foods)



brazier

901 S. MAIN ST., CHELSEA PHONE 475-2677

We offer Simplicity 11 different ways.

2

19" push mowers. Rewind and electric start.

3

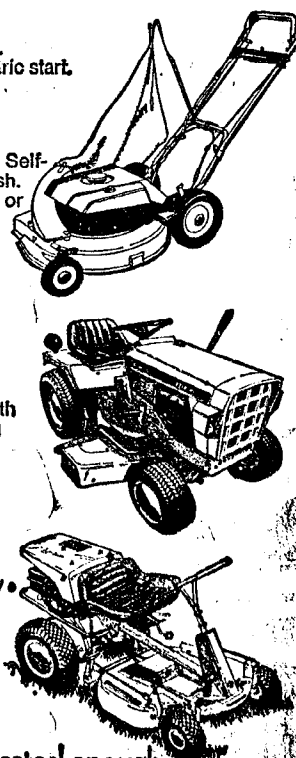
21" walk-behinds. Self-propelled and push. Easy-Spin rewind or electric start.

5

Hard-working tractors... 5 hp. through 14 hp. with 28" to 48" cutting widths.

1

5 hp. Wonder Boy riding mower... 24" and 28" cutting widths.



Your life is complicated enough. We offer Simplicity.

Chelsea Hardware

110 S. Main St.

Phone GR 9-6311